



ProCAB QC Measurement Software

ProCAB QC User Manual

Release 3.0.8

Accurate Technology

Oct 07, 2024

CONTENTS:

- Introduction 1
 - Key Features Include: 1
 - New in Version 3.0 3
- Glossary 5
- Quick Start Install Guide 6
- Quick Start Measurement Guide 8
- Interface Hardware Installation 11
- Software Installation 12
 - Evaluation Screen 13
- Main User Screen 14
- System Configuration 16
 - System Settings 17
 - Measurement Options 19
 - Interface Hardware 22
 - Axis Parameters 24
 - Company Information 25
 - Operator Logins 25
 - CSV Order Templates 26
- Order Templates 30
 - CSV Template Concepts 30
 - Field Mapping Using Templates 31
 - CSV Fields 33
- Label and Report Printing 35
 - Controlling Printing via CSV Templates 36
 - Printing Template Editor 36
- Contact Us 40
- Appendix 40
 - Uninstalling ProCAB QC 40
 - Third Party Software Licenses 42

Introduction

ProCAB QC is an application designed for use with the Accurate Technology Inc. ProTable-CAB measuring system.

The purpose of the system is to provide a method of importing customer orders to be produced and measured for dimensional quality. The software will automatically attempt to identify a part at time of measurement, recording the actual measurements for the part and associate the measurement data with the corresponding line item. The software can optionally print a self-adhesive label from an attached label printer to track parts at time of measure. This label may contain the measured dimensional data, part identification, order ID, line number data and time/date of measurement and other user definable information. Upon completion of measurement of all parts in the order, the software can generate a packing slip showing customer ship and bill information along with line item specifications including measurement results for each part. The application also generates a CSV file for the order containing all part measurement information. This CSV data can then be later imported by a spreadsheet or database program for quality control tracking or other purposes.

Key Features Include:

- Production data imported via .CSV file in single, multi, and batch order collections.
- Multiple user definable data mapping templates for both single and multi-order file formats.
- Software can parse existing business model CSV files based on mapping templates. Import files do not require special formatting. Extra data fields may be included for operators, hidden until report generation, passed to the final output, or ignored completely.
- No limits placed on the number of orders, or items in an order
- Parts can be measured in any sequence.
- Parts can be measured manually (not using the measuring table), if enabled.
- Line items are automatically marked as complete when the measurements meet the desired quantity.
- Orders are marked as complete when all line items have been completed.
- Incomplete orders can be processed as complete allowing for back-ordered parts if option enabled.
- User definable packing slips can be printed containing the customer ship and bill information plus part measurement information.
- Completed order data is written to a CSV file when an order is complete.
- Application data is automatically saved when operations complete.
- Tolerance allowed in measured parts can be configured per-template.

- Production data can be imported in either inches or millimeters per-template.
- Production measurement data can be imported in either decimal or fractional inches or a mixture of the two.
- Displayed measurement position data can be switched between inches and millimeters on the fly.
- Measurement precision is definable for both inches and millimeters.
- Software can recognize if one or more line items have the same measurement specifications (Part Ambiguity).
- The system can be configured to accept out of tolerance parts with user interaction.
- Line item part quantity required, width and height can be optionally modified after file import.
- Rejected part labels can be printed when using the optional label printer and automatically include nominal height and width information.
- Incomplete Order Report can be generated to indicate missing or out of tolerance parts that need to be reproduced to complete the order.
- Primary table measurement axes can be swapped via system option setting.
- Part label printing can be defined and enabled via individual .CSV template.
- Pack list printing can be defined and enabled via individual .CSV template.
- System parameter settings can be exported and imported for backup and migration to newer versions of ProCAB QC.
- Two user definable line item fields and one user definable order field have been added to allow the storage of additional information.
- Pack list can be printed directly after order completion or can be viewed via “Print Preview” based on option configuration.
- Tool Bar that provides buttons to access most used functionality.
- Supports optional DEPTH axis measurements to test parts in all three dimensions.
- Depth axis measurement capability can be determined per-order.
- Defect labels can be printed even if part is out of tolerance.
- Optional angle measurement support. Systems equipped with optional angle measurement capabilities can measure the angle of origin corner, test for tolerance, and record with part data. Angle tolerances are programmable by template.
- Optional Out Of Square (OOS) metric, calculated from height and angle. Tolerance on OOS can be set in order files, this data is written to order data and is available in reports.
- Optional “User Message” field can open a pop-up user message dialog box is presented to the operator when a part is measured and identified. This allows important information to be passed

to the user on a per line item basis. The user must click the OK button on the dialog box to continue.

- Orders can be searched for keywords, and sorted by ascending/descending alpha-numeric order.
- Optional logins and tracking of operators.
- Generated pack lists can now be saved to a PDF and automatically emailed.

New in Version 3.0

- Upgrade to .NET8 LTS
- System data moved into a local database, reducing the risk of corruption and speeding up the application on large data sets.
- Optimized build for modern x64 machines.
- Full under-the-hood overhaul of many systems, improving performance and squashing bugs.
- Overhaul of the UI toolkit, allowing for better resizing and placement of windows.
- Update all TabIndex properties in UI, improving accessibility.
- Allow for fully user defined, renameable fields.
- Added search for the orders list.
- Enhanced ProRF connection and paring routines.
- Rework template generator.
- Rework import templates.
- Added support for quoted fields to CSV importer.

Changes in 3.0.8

- Fixed recording of rotated parts errors
- Updated third party libraries

Changes in 3.0.7

- Made Units selection apply immediately
- Updated multiple third party libraries

Changes in 3.0.6

- Added support for ProRF V3
- Reworked part ambiguity solving
- Fixed a bug in the line item editor that prevented changes from being saved
- Updates to Microsoft libraries

Changes in 3.0.5

- Fixed bug related to the reprint label toolbox button causing an unhandled exception.
- Fixed bug related to generating incomplete order reports causing an unhandled exception.

Changes in 3.0.4

- Fixed bug related to the report editor not getting preview data

Changes in 3.0.3

- Updated Microsoft toolchain
- Fixed bug related to recording out of square in inches
- Fixed the printer used by the label printing functionality

Changes in 3.0.2

- Updated Microsoft libraries
- Fixed bug related to importing with simplified order templates

Changes in 3.0.1

- Timed pop-up dialogs now have customizable durations.
- When a part is measured, jump the line item list to include it in view.
- Fix receiver validation bug.
- Software now saves immediately after deleting a measurement.
- Updates included for DevExpress report generator.

Glossary

CSV File

A text file that uses commas to delimit fields of data that can be parsed or separated into groups. This type of data file can be created or imported by spreadsheet applications and database systems. The ProCAB QC software uses this type of file to import production information and export completed order information.

Line Item

The fundamental description of the part to be created and measured. Minimally, a line item includes the part's nominal width and height dimension, a description (i.e. part number or textual description) and the quantity of part instances (copies) required to fulfill the line item. Optionally, a line item may also include nominal thickness, material, style, a comment and two user definable data fields. These optional fields are not used directly by the system but may be useful to the operator during the measurement process.

Order

A collection of one or more line items that are typically associated with a single customer. In addition to the line items, the order may contain customer shipping and billing information. The customer information is used for packing list generation and writing completed order data files.

Single Order Production Data File

A CSV file that contains production information for a single order. Typically, this type of file has a header section that defines the customer information followed by one or more lines of data with each line representing information for a single line item. This type of file and its structure is described in detail in Single Order File.

Multi Order Production Data File

A CSV file that contains production information for one or more orders. Typically, this type of file contains multiple lines of data with each line representing a single line item. In this file format, EVERY line item contains references to an associated order number/ID and customer information. This type of file and its structure is described in detail in Multi Order File.

CSV Mapping Template

ProCAB QC uses templates to determine what fields of data are to be used from a production data file. The system supports two independent groups of templates, one for single order data files and one for multi-order data files. The user initially configures one or both of these groups of templates depending on which type of file is being used in the customer's production. Once properly configured, production data files can be read by the system and parsed into line items and orders. Mapping Templates are described in detail in Field Mapping Using Templates.

Part Measurement

When an individual part is measured on the ProTable-CAB, a part measurement is created which contains the measured width and height plus a time/date stamp. The part measurement is then compared to each line item in the order. If a match is found within tolerance, the measurement is stored with that line item and the part quantity measured for that line item is incremented by one.

Completed Order CSV File

When the required quantities for all line items have been met, the order is complete. The order data which contains all line items and their associated parts measurements plus any defined customer information is stored to a separate CSV which is named by the Order ID. This data can then be later imported by a spreadsheet or database system for production or quality control statistics.

Packing List

ProCAB QC can optionally print a user defined packing list that has the same information that is stored to the completed order file. This can be used as part of the shipping documentation to the customer if desired. The documentation can also be exported to a variety of formats including PDF, bitmap, CSV, etc. The list can also be emailed directly from the application if the host computer has an email tool installed. This additional capability requires that the Print Preview option be used.

Part Labels

Using an optional label printer, ProCAB QC can be configured to print a user defined self-adhesive label for application to the measured part. The label may contain the measured height and width, in-spec/fail, order ID, line item number, part ID, time/date of measurement or other user defined information.

Quick Start Install Guide

This section can be used as an overview for ProCAB QC Installation and Setup. It summarizes the steps required to install and configure the application. For more details regarding individual topics, review the associated topic sections of this manual.

Item denoted in **RED** are already completed when you purchase the ProTable-CAB measuring system with the integrated industrial computer.

1. **Install ProCAB QC on the target PC.**

2. **Install the provided ProRF wireless receiver driver software on the target PC.**
3. Install and configure any printer drivers for label and report printers.
4. Connect the ProRF wireless receiver to the target PC via a USB cable.
5. Launch ProCAB QC
6. **Activate ProCAB QC.** During the provided 15 day evaluation period, ProCAB QC can be used without activation.
7. Configure the system
 1. Click on the Configuration menu item and select “Log In”.
 2. Enter the default password of 1234.
 3. Press OK (Check Mark).
 4. **Click on the Interface Hardware tab.**
 5. **Click the drop-down arrow button on the Port Setting field.**
 6. **Select the serial port ID that is being used by the ProRF receiver. See *Interface Hardware Installation* (page 11) for details on determining what port ID to use.**
 7. **Click the Auto Configure button to begin the automated configuration of the ProScale Encoder transmitters. Follow the instructions provided.**
 8. **Click on the Axis Parameters tab to set the datum preset and the scaling factor if necessary. This must be completed for both Width and Height axes, and optionally Depth and/or Angle if equipped.**
 9. **Click the OK button to save the changes, move the carriages to verify that the measurements from each are being displayed by the system.**
 10. **If the position of an axis is displaying in an opposite direction from desired, open the Options dialog, choose the Axis Parameter tab and change the encoder direction to the opposite setting.**
 11. Click the System Settings tab.
 12. Choose the desired type of CSV Import Template Style depending on which type is used by your company.

See *Order Templates* (page 30) and either *Single Order Template* (page 28) or *Multiple Order Template* (page 29) for more information about order templates.

 1. Single Order type is used when a production CSV file contains only a single order. If you intend to use batch orders, set up for the single order type.
 2. Multi-Order type is used when a production CSV file contains multiple orders.
 13. Click the Edit Template button to access the template list.

14. Select the Default template and click the Edit Template button. See section titled CSV Template Concepts for details on the CSV templates and the template editor. The default templates are already configured for the included CSV files.
15. Click the OK button to close the CSV template editor.
16. Click the OK button to save the parameters and close the Options dialog.
8. Attempt to import a CSV file by clicking the File/Import Order File menu item.
 1. A file open dialog will be displayed.
 2. Navigate to the location where your CSV import files are located and click on the selected file.
 3. The application will attempt to read and parse the data within the file based on the definitions within the associated CSV template.
 4. If the CSV file has parsing errors, an error box will be displayed showing the error log.
 5. The log will contain debugging data that can be used to identify where the errors occurred.
 6. If the file was loaded without parsing errors, a message box will be displayed showing the import was successful.
 7. **IMPORTANT:** Although a file was imported without parsing errors, it is necessary to verify that the correct data was imported into the correct fields.
9. After one or more orders have been imported into the system, a list of orders is displayed in the Orders window of the application. Clicking on an order ID will update the line item listing relating to that order.
10. Verify that the data is correct for the appropriate fields. Open the full item details by double clicking a line item and selecting “View Full Line Item.”
11. If customer data fields were defined in the CSV template, click on the Bill To Info and Ship To Info tabs to display the respective customer data. If all the data for the order is correct, the template definition is also correct.

Quick Start Measurement Guide

This section describes the general use of ProCAB QC by an operator. It summarizes the steps required to use the basic functions of the application. For more details regarding individual topics, review the associated topic sections of this manual.

This section assumes that ProCAB QC has been successfully installed, configured, and CSV template(s) have been defined correctly.

1. Import orders using the “Import Order File” toolbox icon or the import options in the “File” menu. Imported orders will appear by name in the “Orders/Jobs” list on the right of the application.
2. Select an order from the list to make it active. The active order will become highlighted, and the Line Items list, Bill to Info, and Ship to Info will be filled with the order’s data.

Orders are sorted by alpha-numeric order. The sort direction can be inverted, or the orders can be sorted by proximity to a search using the inputs above the list.

3. To record a measurement, place the part from the order on the ProTable-CAB, with the bottom and left sides of the part against the horizontal and vertical fences. Move the width and height gantries against the top and right side of the part to measure the part’s height and width. The width and height measurements are shown in real-time on the application’s display.

With the gantries against the part, press the “Measure” button on the touchscreen. The system will capture the measurement and attempt to locate a matching line item in the order. The comparison searches against the defined nominal height and width measurements from the line items, enforcing the tolerances defined in the import template. The results of the comparison will be one of the following:

- Exactly one match is found within tolerance for the measured part in the line items.

The system will momentarily display a dialog box that indicates which line item’s quantity was updated. If the matched line item has not met the required quantity, the line item will now be highlighted yellow. If the matched line item has met the required quantity, the line item will now be green.

- Multiple Matches are found within tolerance for the measured part in the line items.

This is referred to as “part ambiguity” and results when two or more line items have the same, or overlapping, nominal dimensions. This may occur where two dimensionally equal line items, but call for parts made of different materials. In this scenario, the system will report the part ambiguity and require the operator to interact with the system to identify the part.

A dialog will be displayed for the operator providing all “visible” fields on each line item, including user defined fields if defined. The operator must then choose the correct line item in the sequence, or fail the part. The measurement is then applied to the selected line item.

- No Matches Found.

If no line items match the measured part within tolerance, the system will find no line item matches. This would occur if the part was improperly manufactured, improperly measured, or if the nominal dimensions of the line item was recorded incorrectly in the import CSV. By default, the system will indicate that there are no matching line items in the order and the measurement is discarded.

The system can be configured to allow out of tolerance parts to be accepted using operator interaction, similar to the part ambiguity path. If enabled, the system will provide a list of

all line items in the order to the operator showing additional line item detail if available. The operator must choose which line item matches the measured part. If the operator chooses a line item to match to the part under test, the measurement is assigned to that line item. The measurement is then stored as Out of Tolerance.

4. When a line item is complete, the line for that line item turns green signifying that the quantity measured has been met. Optionally, the system can be configured such that the completed line item disappears from the order. Thus, when all line items are complete, there are no line items visible and the order is then complete.
5. The application can be configured to support an optional label printer. If enabled and connected, the label printer will print a label as each part is successfully measured. Self-adhesive labels can then be applied directly to the part for identification.
6. When all line items for a particular order are completed, the order is considered complete. Optionally, the user can force an order to be processed as complete (if enabled). This would typically be used to complete an order with incomplete line items processed as a back order.

The order is removed from the order list and the order data is saved as a CSV data file. This file contains all of the original order data imported from the import CSV file, and the measured part data for each line item.

The system can optionally print a pack list containing any of the same information. This pack list can be printed, emailed or exported in various file formats.

7. The operator imports/selects the next order from the Orders list to continue the measurement process.

NOTES:

- Changes to order data are saved automatically, and all data is restored when the application is loaded.
- Orders can be removed from the Orders list without completion, if that capability is enabled.
- Some fields of the Line Item can be modified by the operator, if that capability is enabled.
- Orders do not have to be completed in any sequence.
- Measurements can be made for various orders out of sequence.
- The operator can partially complete one order, switch to another order as parts become available, and switch back to the first order for completion.

Interface Hardware Installation

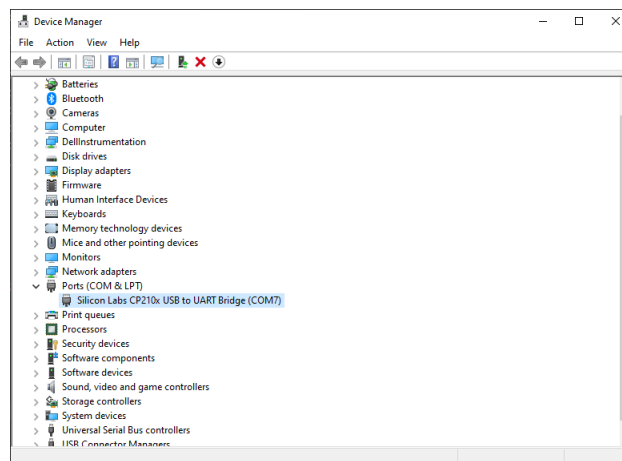
ProCAB QC uses the Accurate Technology ProRF series of wireless measuring devices.

The following section describes the required one-time hardware configuration for these devices. If you have received your ProTable-CAB from Accurate Technology, this setup has been done for you.

The ProRF receiver has both USB and Serial communications, USB requires a Windows driver, while Serial requires 9v external power. USB communications are preferred. If Serial communications must be used, please refer to page 8 of the ProRF user's manual.

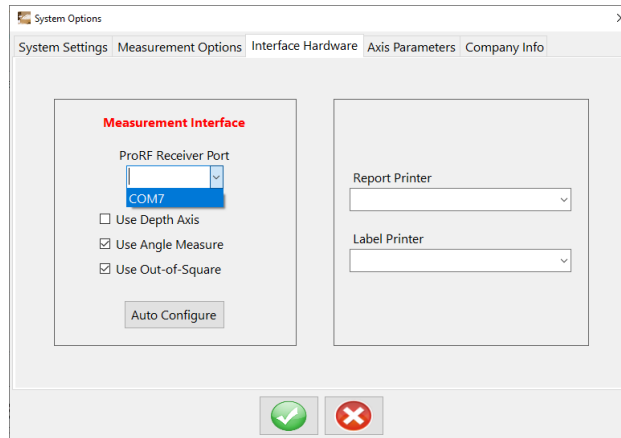
The setup procedure is as follows:

1. Install the supplied USB drivers on the target PC.
2. Connect the ProRF to the computer.
3. From the Windows Start button, open the Control Panel.
4. Open the Windows Device Manager.
5. Under the the Ports (COM & LPT) listing, find the entry Silicon Labs CP210x USB to UART Bridge
6. Take note of the associated COM port, ie COM7.



7. Open ProCAB QC and open the configuration dialog. Login if necessary, the default password is 1234.
8. Go to the Interface Hardware tab
9. Select the COM port from the ProRF Receiver Port dropdown.
10. Enable the Depth Axis, Angle, and/or Out-of-Square as appropriate.

Depth and Angle gauges are options with the ProTable-CAB system, only enable these options if you have the corresponding hardware. Out-of-Square is a measure calculated using the angle axis, only enable this when Angle is also enabled.



11. Click the Auto Configure button to start the automatic configuration routine. You will need to take the top off of the transmitter devices to expose the Learn button, and press these when prompted by the software.

Software Installation

ProCAB QC can be installed by the installation file, ProCAB QC 3.0 Installer.msi.

All software dependencies, aside from Windows itself, are included in the installer.

1. The installer can be downloaded from ProScale.com¹, requested via email, be provided pre-installed with the ProTable-CAB computer system.
2. Double-click the installer to run the installation wizard.
3. Click through the installation wizard, be sure to read the notice.
4. Once installed, ProCAB QC can be started from the icon on the desktop or the item in the start menu.
5. Activate ProCAB QC on the Evaluation Screen. 15 days of evaluation are provided with installation, after which activation is necessary.

¹ <https://www.proscale.com/procab-qc-measurement-software/>

Evaluation Screen

ProCAB QC is distributed initially as a full featured evaluation release. The program is fully operational for a period of 15 days from initial installation. The user can purchase the software at any time during the trial period. After the trial period has expired, the application will not function until activated.

When the application is launched in evaluation mode, the screen shown below is displayed:

Product Registration For ProCAB QC

Thank you for evaluating the Accurate Technology ProCAB QC software. This software is distributed as an evaluation version with a 15 day trial. It is fully functional and is only limited by the trial period.

Clicking the Register Later button will allow you to evaluate the software in its fully functional state. The Register button will generate an email with the Registration ID code prepopulated. You can also manually email the registration code to engineering@proscale.com. You will then receive a License Key to activate the software. Enter this code in the License Key field and click the OK button. The software is now tied to the installed machine.

Registration ID: ON4SODNT8UNH1UE3

License Key:

Register Later Register OK

The form provides the following information/options:

- The option to register the application after purchase by clicking “Register”.
- Continuation of the evaluation period by clicking “Register Later”.
- Entry for a License Key that unlocks the application on the installed computer.

To run the program in evaluation mode, click on the “Register Later” button.

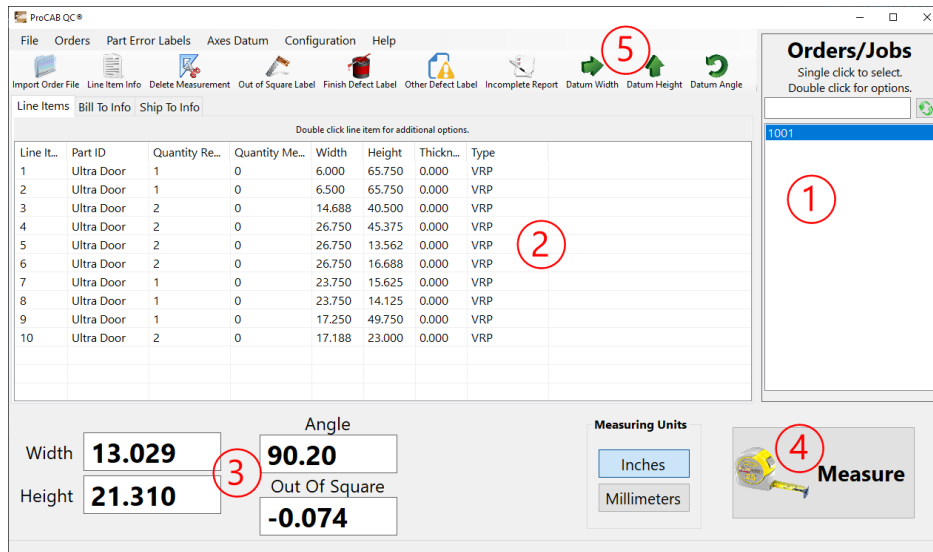
Purchasing the Software To purchase the software and register it for permanent operation on a specific PC, complete the following:

1. Contact Accurate Technology, Inc. to purchase the software at +1-800-233-0580 (Toll free in the U.S.), at +1-828-654-7920, or by email at sales@proscale.com. We accept Visa, MasterCard, American Express and Discover.
2. After the payment has been completed, launch the program and the demo screen is provided as shown below.
3. If you have a dedicated email tool such as Outlook installed on your PC, click the Register button. This will cause a pre-populated email to be generated with the Registration ID already in the body of the email. If you do not use an email client, such as in the case of web based email, copy the registration code from the Registration ID field <Ctrl-C> and paste it into a composed email in your browser. Email the ID to engineering@proscale.com.
4. We will email you back a license key code with 1 business day. Copy the provided Key code into the License Key field. Click the OK button. If valid, the program is now unlocked and will launch immediately after activation.

Note: The software is now licensed to the specific machine on which it was installed. You will not be able to install the application permanently on another machine unless you complete either of the following:

- Purchase an additional copy of the software for use on another machine.
- Transfer the license to another machine, deactivating the software from the original machine. For more information on license transferring, see [Here in the Appendix](#) (page 41)

Main User Screen



1. The Orders List

This area displays all of the orders currently loaded in the system. Orders can be selected with a click. The selected order is highlighted in the list, and the order details fill the Detail View (2). When measurements and other events occur, these will apply to the selected order.

2. The Order Detail View

This area displays details relating to the currently selected order. The area is divided into three sub-areas via a tabbed view.

- Line Items

A list of line items that form the body of the order. Each line item relates to a part definition that is to be produced.

The fields of the line items displayed can be changed using the import template. These fields can include:

- Line Number
- Part ID
 - Can be a descriptive name, part number or other identifier
- Nominal Width, Height and Thickness dimensions
- Quantity Required
- Quantity Measured
- User Message
 - A message that, if configured, gets displayed to the operator when a part is measured.
- User Defined
 - Up to 18 freeform fields. It is recommended to add details about the parts to user defined fields, like material, finish, or the post-measure location. If fields are included for other outputs, like a database id to encode in a barcode, it is recommended that these be hidden.
- Bill To Info
 - Customer Bill To data that can be imported from the CSV file if present and defined.
- Ship To Info
 - Customer Ship To data that can be imported from the CSV file if present and defined.

3. **Measuring position**

The current measuring position. As the gantries move, the displayed position updates in real time with the current measurement. If attached and configured, the angle and depth gages are displayed in real time here too.

4. **Measure Button**

Clicking or pressing (with touchscreen monitor) on this button activates the measurement process. A part is placed on the table against the fixed stops. The moving stops must be positioned against the top and right side of the part. The Measure button is then activated. The system searches the line items of the selected order to locate a match.

5. **Tool Bar**

Provides buttons to quickly access the most commonly used functionality of the ProCAB-QC software.

System Configuration

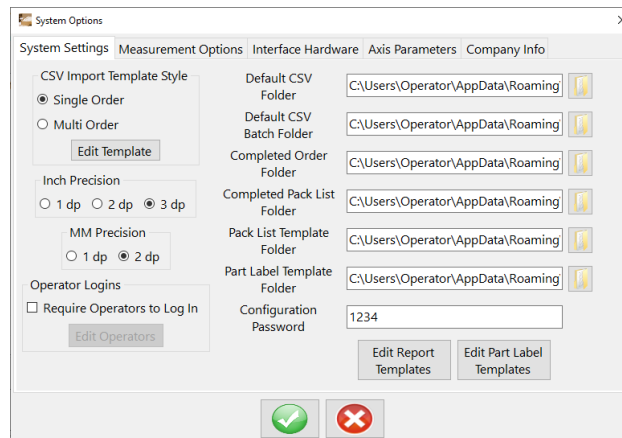
Prior to use, ProCAB QC requires some configuration.

To enter the system configuration menu, click on the Configuration/Login menu item. A password dialog will be presented. Enter the system password and press the enter key or click OK.



The default password is 1234. It is strongly recommended to change the password and keep records of the system password.

The application will display the System Options dialog.



System options are divided into groups using a tabbed display. The tabs are:

System Settings

General settings for the system including import template configuration, default directory settings and precision/accuracy configuration.

Measurement Option

These settings cover operations relating to measurement functions.

Interface Hardware

This tab is used to configure the measuring system hardware interface and the system printers.

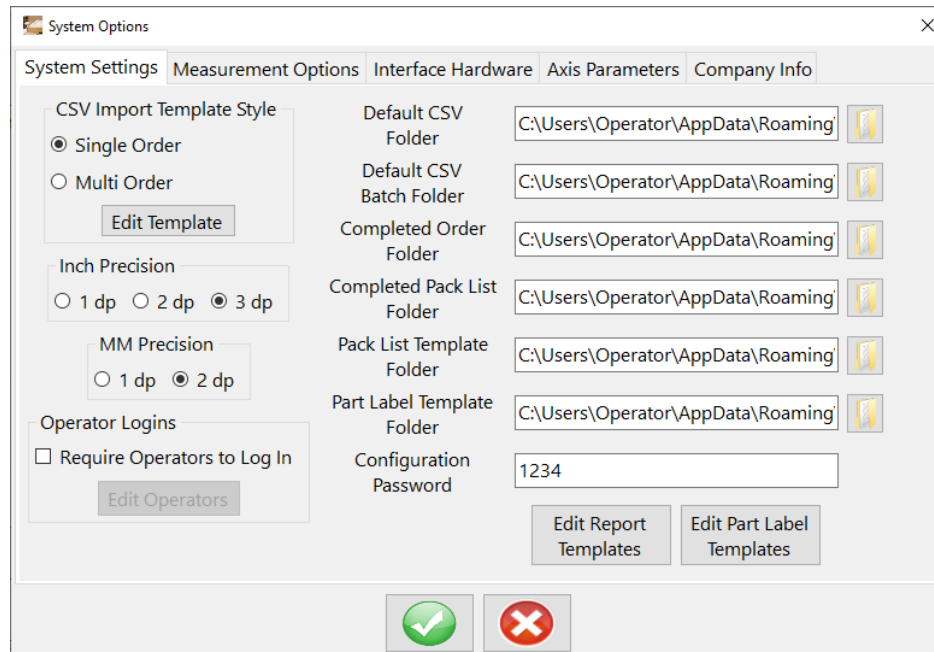
Axis Parameters

This section is used to configure aspects of the width and height measurement axes.

Company Info

YOUR company information to be printed on the packing list upon order completion if enabled.

System Settings



CSV Import Template Style

Selects the type of CSV file to be imported by the system. The system can import Single Order type files or Multi Order type files. This configuration is covered in additional detail in the section CSV Template Concepts. To edit the selected style of CSV templates, click the Edit Template button.

Default CSV Folder

The default path to CSV production data files to be imported. The path can be entered manually or click the folder button next to the field to browse to the target folder location.

Default CSV Batch Folder

Since Single Order CSV files have only a single order per file, loading individual order files by hand can be tedious if many orders are required to be loaded. An alternative is to use a Batch Order file. This file is a simple text file that contains a list of Single Order CSV file names. This list can be created with a simple text editor such as notepad. This entry is the default path to CSV batch files. The path can be entered manually or click the folder button next to the field to browse to the target folder location.

Completed Order Folder

The default path to the folder that contains completed orders. After all of the line items of an order are completed, the order and all of its part measurements are saved to a CSV file located in this directory. The path can be entered manually or click the folder button next to the field to browse to the target folder location.

Completed Pack List Folder

The default path to the folder that contains completed pack lists. After all the line items of an

order are completed, the order pack list is generated and a copy is exported as a PDF file in this directory. The path can be entered manually or click the folder button next to the field to browse to the target folder location.

Pack List Template Folder

The default path to the folder that contains Pack List printing templates. Pack list printing format is now user defined by printing templates. If desired, the CSV production order data can contain the name of the pack list printing template to be used. All pack list printing templates should be stored in this directory.

Part Label Template Folder

The default path to the folder that contains Part Label printing templates. Part label printing format is now user defined by printing templates. If desired, the CSV production order data can contain the name of the part label printing template to be used. All part label printing templates should be stored in this directory.

Configuration Password

This is the password that is used to access the options dialog. The default password is 1234. It is recommended that this password be changed and documented.

Edit Report Templates

Pack list and incomplete order reports are now user defined using printing templates. To edit the default pack list, the incomplete order report or any other user created pack list, click on the Edit Report Templates button. See Configuring Printing Templates for details regarding report formatting.

Edit Part Label Templates

Part labels are now user defined using printing templates. To edit the default part label or any other user created part label, click on the Edit Part Label Templates button. See Configuring Printing Templates for details regarding report formatting.

Inch Precision

Defines the number of digits to the right of the decimal point that are to be displayed while in inch measurement mode.

MM Precision

Defines the number of digits to the right of the decimal point that are to be displayed while in millimeter measurement mode.

Operator Logins

Settings related to operator login requirements. See Operator Login for details about the Operator Login system.

- **Require Operators to Login** - Defines whether or not to require operators to log in before operating ProCAB QC.
- **Edit Operators** - Opens configuration dialog to add/delete operators, set operator PINs, and set the allowed standby time before logout.

Measurement Options

System Options

System Settings | **Measurement Options** | Interface Hardware | Axis Parameters | Company Info

Allow Out Of Tolerance Parts
 Delete Line Item from list when quantity reached
 Allow Individual Order Deletion
 Allow All Orders To Be Deleted
 Allow Line Item Height Edit
 Allow Line Item Width Edit
 Allow Line Item Quantity Edit
 Allow Incomplete Orders to be Processed
 Swap Width and Height Axes
 Do Not Auto Save Order When Complete
 Show User Message Dialog if data present
 Show Order Complete Message

Use North American Date Format (mm/dd/yy)
 Allow Manual Measurement Entry
 Print "Out Of Spec" label if no part match found
 Test completed line items on new measurements
 Print Part Labels:

Pack Lists

Create Pack Lists:

Print Export to PDF Email To Customer

Use Report Print Preview
 Use Label Print Preview

Allow Out Of Tolerance Parts

If selected, the system will provide the operator with a method of accepting a measured part that is outside the defined tolerances and associating it with one of the line items of the current order. See section Measuring Parts for an Order for details on measuring parts.

WARNING: It is not recommended to allow out of tolerance parts. If you have trouble with part acceptance, you should first verify your manufacturing process and/or increase acceptable tolerances.

Delete Line Item from list when quantity reached

When this option is enabled, the line item is automatically removed from the line item list when the quantity of measured parts reaches the quantity required. When this option is disabled, the line item remains on the list when it is fulfilled, turning green to show that it has been completed.

Allow Individual Order Deletion

If checked, the user can delete individual orders from the order list by double clicking on the order ID and selecting Remove Order from the pop-up menu. If not enabled, individual orders cannot be deleted and must be completed to be removed from the list OR processed as Incomplete if enabled.

Allow All Orders To Be Deleted

When enabled, this option allows the operator to delete all the orders in the order list at one time. This is completed from the Orders/Remove All Orders menu item.

Allow Line Item Height Edit

If selected, the user can edit the defined height dimension of a line item using the line item

editor. NOTE: Once one or more parts have been measured for a line item, the height dimension for that line item CANNOT be modified even if this option is enabled.

Allow Line Item Width Edit

If selected, the user can edit the defined width dimension of a line item using the line item editor. NOTE: Once one or more parts have been measured for a line item, the width dimension for that line item CANNOT be modified even if this option is enabled.

Allow Line Item Quantity Edit

If enabled, the user can edit the defined quantity required of a line item using the line item editor. NOTE: The quantity required cannot be set to a number lower than the current quantity of measured parts.

Allow Incomplete Orders to be Processed

If enabled, allows an incomplete order to be processed as completed. Please Note: The order data is written to the Completed Orders folder as normal but any incomplete line items will show part shortage quantities. If pack lists are used, a pack list will be printed as normal.

Swap Width and Height Axes

If unchecked, the width axis is the horizontal axis and the height axis is the vertical axis. If checked, the width axis is the vertical axis and the height axis is the horizontal axis. If the majority of your product is longer than it is wide, enabling this feature will allow the product to be placed 90 degrees rotated to allow for easier measurement. This feature will not interfere with the new auto part rotation measurement feature.

Do Not Auto Save Order When Complete

When checked, an order is not automatically processed as complete after the last line item is measured. This allows an order to remain on the active order list indefinitely and the user must manually process the order as complete by double clicking on the order ID in the Job List and select Process Order as Complete.

Show User Message Dialog if data present

When checked, a User Message Dialog is presented after a part is measured if the associated User Message line item field for that part has been populated with a text message.

Show Order Complete Message

When checked, the system will present a timed message that pops up to tell the operator that the order has been completed.

Use North American Date Format

If enabled, time and date stamps are in mm/dd/yyyy format. If not checked, dates are in dd/mm/yyyy format.

Manual Measurement Entry

When enabled, allows the user to enter measurements manually via dialog box. This would be used if measuring a part that was larger than the capabilities of the ProTable-CAB. See Manual Measurement of Parts for details. Manually measured parts are recorded in the system and indicated on documentation as a manual measurement entry.

Print “Out Of Spec” label if no part match found

If enabled, automatically prints a label to be placed on the measured part to indicate that the part is out of accuracy tolerance. Note that this feature is only actionable when a label printer is connected and is enabled.

Test Completed Line Items on New Measurements

Normally, new measurements are only compared to line items that are not completed. If this feature is enabled, completed line items are also compared during a measurement. This allows for “extra” parts to be recorded with a matching line item even though the quantity required has been met. Typically, this feature would normally not be used.

Print Part Labels

This option controls the printing of part labels. The available choices are:

- Never - Never prints a part label. Part label printing is disabled.
- Always - Always prints a part label using the default part label printing template.
- By Template - The CSV file template in use determines if and what type of part label is to be printed. The choices are determined by how the Part Label Template cell or column is defined. The choices are:
 - Never - if the Part Label Template cell/column is undefined (blank), a part label is not printed.
 - Always default part label - If the Part Label Template cell/column is defined but the imported data has nothing in that cell/column then the default label is printed.
 - Always user defined part label - If the Part Label Template cell/column is defined and the imported data has a valid part label printing template file name, then that user defined part label is printed. If the part label printing template file name is invalid or blank, the default part label printing template is used.

Print Pack List

These options control the printing of pack lists. The available choices are:

- Generate Pack Lists, The available choices are:
 - Never - Never generate a pack list. Pack list printing, exporting, and emailing is disabled.
 - Always - Always generate a pack list using the pack list template defined by the Order CSV, or the default pack list printing template.
 - By Template - The CSV file template in use determines if and what type of pack list is to be printed. The choices are determined by how the Pack List Template cell or column is defined. The choices are:
 - * Never - if the Pack List Template cell/column is undefined (blank), a pack list is not printed.

- * Always default pack list - If the Pack List Template cell/column is defined but the imported data has nothing in that cell/column then the default pack list is printed.
 - * Always user defined pack list - If the Pack List Template cell/column is defined and the imported data has a valid pack list printing template file name, then that user defined pack list is printed. If the pack list printing template file name is invalid or blank, the default pack list printing template is used.
- Print, Whether or not to send the generated Pack List to the report printer.
 - Export to PDF, Whether or not to export the Pack List to a PDF file located at the configured “Completed Pack List Folder”.
 - Email to Customer, Whether or not to send the Pack List as an attached PDF file to the customer email address defined in the current order.
 - Email SMTP, Opens a settings dialog to configure the SMTP settings for emailing a pack list to a customer.

Use Report Print Preview

If checked, pack list and incomplete order reports are initiated first in print preview mode. This allows the user to verify the report on the screen and optionally change the default settings such as the target printer or allow the report to be exported in a different format such as PDF prior to printing. If disabled, the report automatically prints to the default report printer defined in the Interface hardware tab.

Use Label Print Preview

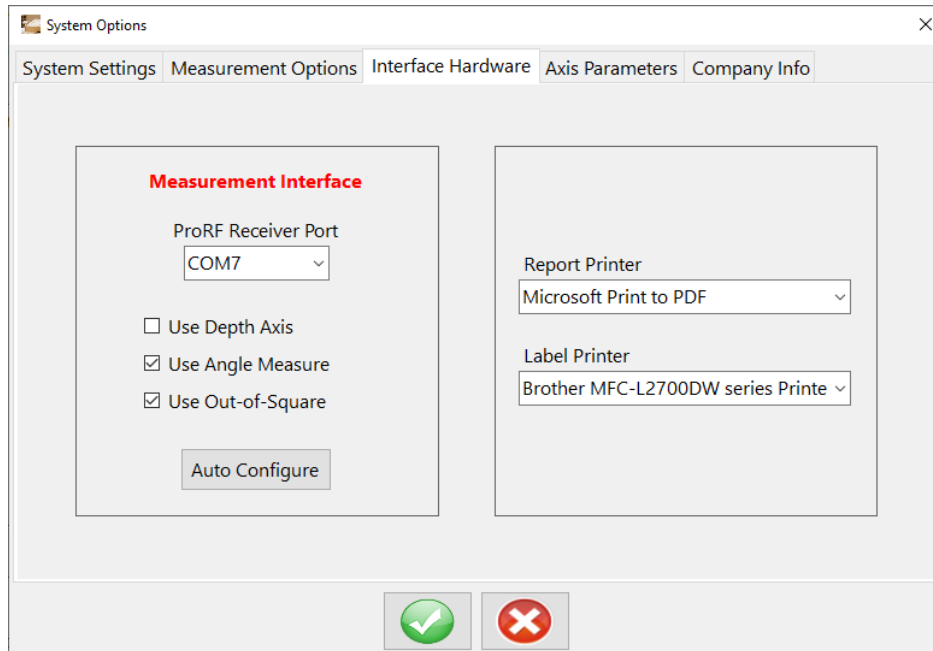
If checked, a print preview dialog of the pending part label is displayed on the monitor prior to printing. This allows the operator to view the label information before the print operation occurs. The user can then cancel the printing operation or allow it to continue to the defined label printer.

Interface Hardware

The Measurement Interface is used to configure the ProScale measurement equipment. The system supports the ProRF Universal receiver, with ProRF Encoder Transmitters on each measuring gage.

Prior to operation, a driver must be installed on the PC to interface with the ProRF receiver’s USB port. Download the installer from the ProCAB QC page on proscale.com. Follow the installation procedure. Once installed, connect the ProRF receiver to the computer via USB.

Click the Port Setting pull-down list to select the associated communications port for the ProRF receiver. The COM number to select will depend on the PC and other equipment already attached. To identify which COM selection to use, you can check under the Windows Device Manager usually located in the Control Panel under System. Expand the Ports (COM & LPT) tree and look for the device labeled ProScale ProRF Receiver. The associated COM port number will be next to the label.



Auto Configure

This will bring up a configuration wizard that will automatically program the receiver and associate the transmitters with the receiver. This procedure requires the user to activate each transmitter's LEARN button when requested. This button is located inside the transmitter next to the channel switch as shown below.

After the configuration wizard has completed, the transmitters and receiver should be interfaced properly to the system.

Use Depth Axis

Checking this option enables the depth axis functionality of the ProCAB-QC software. The optional Depth axis hardware must be installed for this functionality to be enabled. When active, the Depth position window and the associated datum button on the main screen are displayed.

Use Angle Measure

Allows the origin angle to be measured and recorded if your ProTable-CAB has the optional angle measurement hardware option installed.

Use Out-of-Square

Enables the calculation of the Out-of-Square from the vertical axis and angle measurements.

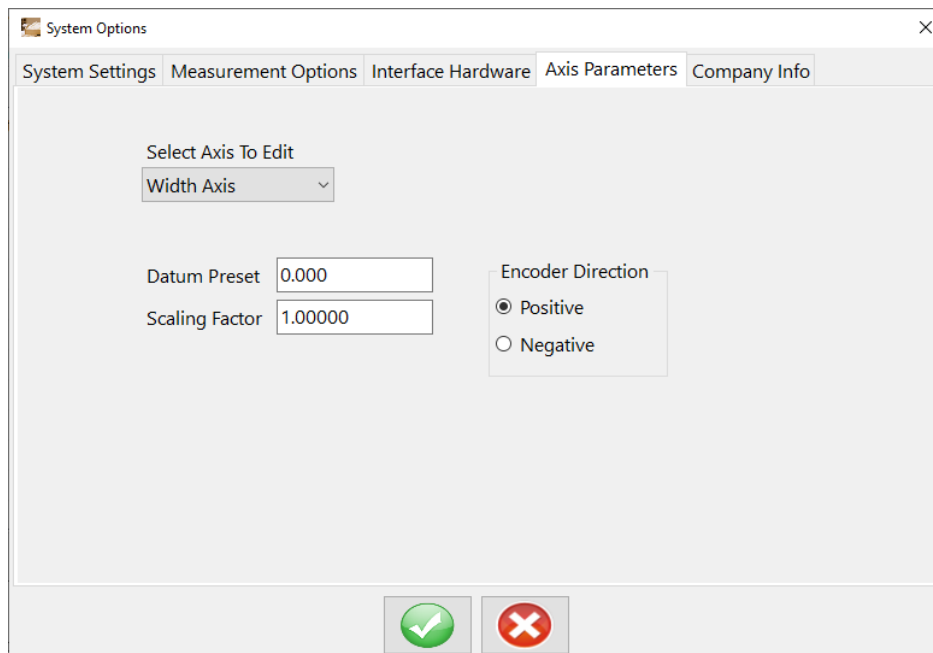
Report Printer

This pull-down selection allows the user to configure the default printer to be used to print reports (pack lists and incomplete order reports). All available installed printers are displayed if selector is opened. Printers are installed via the standard Windows printer installation wizard. As such, printers can be connected to the local industrial computer that hosts ProCAB QC or on a network.

Label Printer

This pull-down selection allows the user to configure the default printer to be used to print labels. All available installed printers are displayed if selector is opened. Printers are installed via the standard Windows printer installation wizard. As such, printers can be connected to the local industrial computer that hosts ProCAB- QC or on a network. Note that the label printer is typically a specialized roll feed type thermal or ink printer specifically designed to print labels. ProCAB-QC does not support the printing of sheet feed type labels.

Axis Parameters



The Axis Parameters tab is used to configure and calibrate the measuring gages.

Datum Preset

The pre-defined position used to calibrate the axis when it is placed against the inside hard-stop of the ProTable-CAB. See Initiating Axes Datums for instructions on recalibrating the axes.

Scaling Factor

A multiplier that allows for measuring accuracy adjustment in the linear encoders.

Encoder Direction

Changes the sign of the reported position of the axis. To configure an axis, select the axis from the axis pull-down menu. Once selected, set the associated fields to the appropriate values.

Pivot Distance

For the angle gage only. The distance between the vertical fence pivot point and the ProScale encoder fence contact point. This distance has been empirically derived at the factory and should not be changed.

Company Information

The screenshot shows the 'System Options' dialog box with the 'Company Info' tab selected. The fields are as follows:

Field	Value
Company Name	Accurate Technology Inc.
Address 1	270 Rutledge Rd
Address 2	Unit E
City	Fletcher
State/Province	NC
Zip	28732
Country	USA
Phone	1-828-654-7920
Website URL	www.proscale.com
Logo	Preview of Accurate Technology Inc. logo
Logo File Name	C:\Accurate Technology.JPG

The Company Info tab is used to configure ProCAB-QC with the user's company information. This data is used when generating a pack list to be printed on the form's header section.

As much or as little of the company information can be entered.

In addition, an image file of the company logo can be imported to be printed on the pack list header. This can be a JPG, PNG, BMP or other graphics files. The image will automatically be scaled to fit the area defined on the pack list. The path to the file can be entered manually or the user can click on the Folder icon to open a file open dialog. This can be used to navigate to the desired image file.

Operator Logins

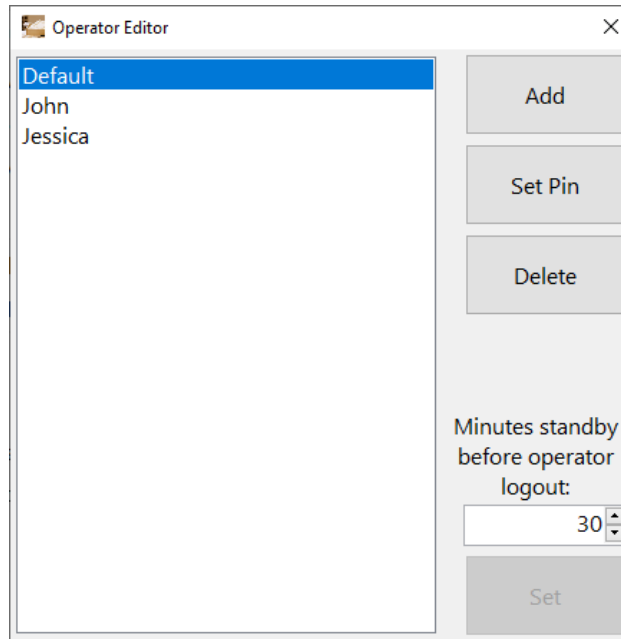
When enabled, the Operator login system will require operators to log into ProCAB QC. An operator will have to log in with their name and PIN before using ProCAB QC, and is encouraged to log out when leaving the table.

The operator is then associated with each part they measure in the output CSV for later internal tracking. Employers can correlate operators with measured parts, when the measurements occur, the error of these parts, and/or how often parts get measured with a rotation.

When disabled, the associated operator will always be "Default", and no action will be taken with inactivity.

Add

Adds a new operator to the list of operators. Will prompt for the new operator's name and PIN.



Set PIN

Resets the PIN for the selected operator. Can be used to replace a forgotten PIN. Will prompt for the new PIN.

Delete

Removed the selected operator from the list of operators. All existing measurements will still refer to the operator after deletion.

Minutes Standby:

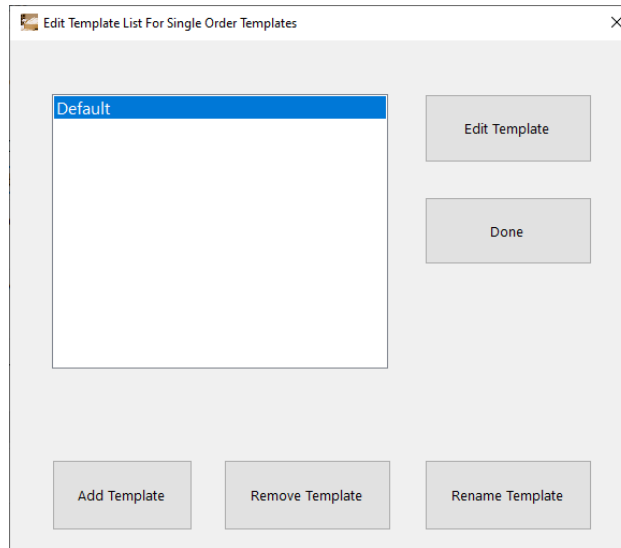
The number of minutes before an operator is automatically logged out from inactivity. A value of 0 will prevent the inactivity logout from occurring. The Set button needs to be pressed to save this value.

CSV Order Templates

Template List

This dialog shows the list of templates configured for the currently selected style. Operations in this dialog include:

- Edit an existing template shown in the list.
- Add a new template to the list.
- Remove an existing template from the list.
- Rename an existing template.

**Edit Template**

Open the template editor dialog for the selected template. See the following sections for details about the template editor dialogs.

Add Template

Create a new template of the current style. You will be prompted for the name for the new template.

Additional templates may be desired to accommodate multiple CSV formats, to define different tolerances, or otherwise provide multiple import options.

Remove Template

Removes the selected template from the system. A warning message will be issued that the template is about to be deleted. Clicking Yes will permanently delete the template data from the system.

Deleting a template CANNOT be undone.

Rename Template

Renames the selected template. You will be prompted for the new name for the template.

Done

Closes the dialog.

Single Order Template

Order Columns			Order Header		
	Col	Show	Width	Row	Column
Line Item ID	B	<input checked="" type="checkbox"/>	70	1	A
Part ID *	D	<input checked="" type="checkbox"/>	110		
Quantity Required *	G	<input checked="" type="checkbox"/>	110		
Width *	J	<input checked="" type="checkbox"/>	70		
Height *	K	<input checked="" type="checkbox"/>	70		
Pack List Template					
Part Label Template					
Test Thickness					
Billing Customer Name				2	B

Tolerances		
	Plus	Minus
Width	0.794	Bilateral
Height	0.794	Bilateral
Thickness	0.794	Bilateral
Angle	0.500	Bilateral
Out of Square	0.794	Bilateral

Units: Inches MM

Line Item Start Row: 13

This dialog allows you to edit a single order template.

Template Name

Displays the name of the current template, and allows renaming.

Order Header

Maps fields to the CSV header. This is used for order data that is not associated with any particular line item, like Order Name, customer data, or report templates. The mapping targets individual cells by row and column. See the Single Order Example.csv file provided with ProCAB QC for an example header format.

Order Columns

Maps fields to the CSV file data. This is used to create line items from the records of the CSV file. For every line after the header (starts with Line Item Start Row), this mapping will attempt to read the record.

Each field has a file column (Col), which is the column read from the CSV file. Each field additionally has a Show toggle and a Show Width, these define how the field is displayed on the main window.

Fields marked with an asterisk (*) are required. Required fields must have a defined column, and this column must have valid data in the CSV file.

Tolerances

Defines the allowable tolerances of measured parts, in width, height, thickness, angle, and out of square. Tolerance in the positive direction (too long) must be defined for all dimensions, while tolerance in the negative direction (too short) may be left empty to imply bilateral tolerances. Tolerances are stored in the selected Units, inches or millimeters.

Units

Defines the units used by the CSV import, inches or millimeters. A CSV file must only use

one measuring unit. Decimal measurements (12.34) are supported in both units, and fractional measurements (12 3/4) are additionally supported in inches.

Line Item Start Row

Defines the row of the CSV file that line item records begin on. All rows above this line are assumed to be header, all rows at and below are assumed to be line item records.

Multiple Order Template

Order Columns	Col	Show	Width
Line Item ID		<input checked="" type="checkbox"/>	70
Part ID *	D	<input checked="" type="checkbox"/>	110
Quantity Required *	C	<input checked="" type="checkbox"/>	110
Width *	F	<input checked="" type="checkbox"/>	70
Height *	G	<input checked="" type="checkbox"/>	70
Thickness	H	<input checked="" type="checkbox"/>	70
User Message		<input type="checkbox"/>	110
Material	I	<input checked="" type="checkbox"/>	110
Hinging		<input type="checkbox"/>	110
Finish		<input type="checkbox"/>	110

Tolerances	Plus	Minus
Width	0.794	Bilateral
Height	0.794	Bilateral
Thickness	0.794	Bilateral
Angle	0.500	Bilateral
Out of Square	0.794	Bilateral

Units
 Inches
 MM

Line Item Start Row

* Field is required

This dialog allows you to edit a multi order template.

Order Columns

Maps fields onto the columns of the CSV file.

Fields associated with the order, but no particular line item, are first. These order fields do not have options for Show or Width. Only the first instance of these fields is required, but conflicting instances are considered errors and will fail the import.

Line item fields have a Show toggle and width, which determines how the field is displayed on the main window.

Fields marked with an asterisk (*) are required. Required fields must have a defined column, and this column must have valid data in the CSV file.

Tolerances

Defines the allowable tolerances of measured parts, in width, height, thickness, angle, and out of square. Tolerance in the positive direction (too long) must be defined for all dimensions, while tolerance in the negative direction (too short) may be left empty to imply bilateral tolerances. Tolerances are stored in the selected Units, inches or millimeters.

Units

Defines the units used by the CSV import, inches or millimeters. A CSV file must only use one measuring unit. Decimal measurements (12.34) are supported in both units, and fractional measurements (12 3/4) are additionally supported in inches.

Line Item Start Row

Defines the row of the CSV file that line item records begin on. All rows above this line are assumed to be header, all rows at and below are assumed to be line item records.

Order Templates

CSV Template Concepts

ProCAB QC imports orders in the form of CSV files. This format is easily exported from common spreadsheet, database, and process management softwares.

Technical notes:

- CSV files must be encoded as UTF-8, use standard (Unix or DOS) line endings, and be delimited by the ASCII comma. This is the default in Microsoft Excel.
- Non-delimiting commas must be escaped with a quoted field. This is the default in Microsoft Excel.
- Each line after the header must represent exactly one line item.
- Each line item must include at least Part ID, Quantity Required, Nominal Width, and Nominal Height.
- If the depth gage is used, each line item must include Nominal Thickness.
- If user messages are enabled, each line item may include a User Message.
- Each line item may include up to 18 custom fields. These fields are not used in ProCAB QC, but are stored and passed to the output file. Additionally, these fields can be used in generated reports and labels.

ProCAB QC supports two template “styles”. The template style used should depend on your business model and format of your production data.

Single Order Format

This style stores the data for exactly one order. An optional header can include order data, like the name, report and label templates, and customer information. Following the header is the list of line items, exactly one per line for the remainder of the file.

Table 1: Example single order format

A	B	C	D	E	F		
Order ID				Report	Tem-	Label	Tem-
		plate			plate		
Billing	Cus-	Billing	Ad-	Billing EMail			
tomer		dress					
Shipping	Cus-	Shipping	Ad-	Shipping			
tomer		dress					
Line Number	Part ID	Qty. Req	Width	Height	Custom Field		
Line Number	Part ID	Qty. Req	Width	Height	Custom Field		

Multi Order Format

This style contains the data for multiple orders. An optional header will be completely ignored by ProCAB QC. Each line item must refer to the order in which it belongs. Report templates, label templates, and customer data, if included, must be defined at least on the first line item in an order, conflicting data will result in an error and duplicate data will be ignored.

Table 2: Example multi order format

A	B	C	D	E	F	G
Order ID	Part ID	Qty. Req	Width	Height	Custom Field	Label Template
Order ID	Part ID	Qty. Req	Width	Height	Custom Field	Label Template
Order ID	Part ID	Qty. Req	Width	Height	Custom Field	Label Template

Field Mapping Using Templates

To accommodate the diversity of customer data formatting, ProCAB QC utilizes import templates to map data in from your CSV files. Multiple templates of both single- and multi-order style templates may be defined at once. Each template is independently configurable and provides a method to import order data when more than a single order file format structure exists.

As part of the initial configuration process, the user must choose which type of import file type to use, single or multi-order format. The administrator can use the initial Default template and then assign the associated data fields from the production file sample to the appropriate cell or column data in the template.

In some cases, the order data structure may be submitted or defined by the customer and may not be consistent from customer to customer. In this case, the administrator can define multiple templates, perhaps one for each customer. Each template can then be configured for the associated customer's order data file structure.

The template configuration process may be iterative, requiring several import attempts and template modifications prior to a successful data import. Once the template(s) have been configured, template modification should not be required unless the order data file structure changes.

The template configuration process is outlined as follows:

1. Open the configuration window using the Configuration menu item. Login if necessary, the default password is “1234”.
2. Select your desired Csv Import Template Style; Single Order or Multi Order.
3. Click the Edit Template button.
4. The Template List will be displayed. Templates can be created, renamed, and deleted.
5. Choose the Default template, another existing template, or create a new template.
6. Open the template editor by clicking the Edit Template button.
7. Fill out the column/cell entries as required. Note that only fields marked by an asterisk are required.

During this step, it may help to open an order file in Microsoft Excel as a reference.

8. Select the units used by your CSV files, millimeters or inches. The displayed units will be automatically converted if needed.
9. Define the upper and lower accuracy tolerances for the width and height measurements. Leaving the lower tolerances empty to use bilateral tolerances.
10. Save your changes and close the editor by clicking the OK button on the template editor, the Done button on the template list, and the check button on the configuration window.

When saving, validity checks will be performed on your template. Should these fail, you will be prompted with the data you need to correct. Once corrected, try to save again.

11. Open a CSV file to import by clicking File/Import Order File, and selecting the file to import. If more than one template has been created, the system will present a list of templates to choose from. The selected template is then used to parse the CSV file.

Note: If you have the CSV file open, you will have to close it before importing. This is due to the way Windows protects against file corruption.

- If ProCAB QC fails to import your order(s), a list of errors will be displayed.
- If ProCAB QC succeeds in importing your order(s), check over the imported data to ensure it is correct.

If errors are detected or if the imported data is not in the correct fields, reopen the template editor and correct any mistakes. You will likely need multiple attempts. If you are having persistent issues with configuring a template, contact customer service for assistance.

CSV Fields

Fields that can be imported by the CSV templates can be separated into order fields and line item fields. Order fields are non-item specific data about the order, like customer details and printing templates. Line item fields are item specific data, like nominal dimensions, required quantity, and user defined features.

In single order files, order fields are all in the header. In multi order files, order fields are included with the lines associated with the order.

Order Fields

Order Name

Name used to identify the order. The names of orders are presented to operators, used in generated file names, and can be searched.

Duplicates are NOT allowed, importing an order with the same name as an existing order will result in a conflict.

Pack List Template

Name for the template used in Pack List generation. When “By Template” generation is selected for pack lists, the presence of this field enables generation.

The name should NOT include the .repx file extension.

Part Label Template

Name for the template used in Part Label generation. When “By Template” generation is selected for part label, the presence of this field enables generation.

The name should NOT include the .repx file extension.

Test Thickness

Only used when a depth gage attachment is configured.

Enables testing of the thickness of parts in the order. “Yes” or “True” to enable thickness testing, “No”, “False”, or empty to disable.

Billing/Shipping Customer information

Metadata about the order.

This data is presented under the Billing Customer and Shipping Customer tabs on the main screen for operators. This data is also included in CSV output and can be printed on part labels and pack lists.

User defined

Metadata representing an arbitrary property about the order.

This data is also included in CSV output and can be printed on part labels and pack lists.

Line Item Fields

Line Item ID

Unique number associated with the line item.

Each order should have line items numbered 1 - n. If not provided, the ID will be generated automatically.

Part ID

Human readable name for the line item. Often part numbers or sales names are good choices.

Quantity Required

Number of parts that should match this line item.

The order is marked as complete when all line items are at the required quantity.

Width

The nominal width of parts matching this line item.

Height

The nominal height of parts matching this line item.

Thickness

The nominal thickness of parts matching this line item. Only used when a depth gage attachment is configured and “Test Thickness” on the order is positive.

User Message

The message shown to the operator upon measuring a part matching the line item.

Messages can include any arbitrary text, often used to inform an operator where to move a completed part (ie “Place on cart A”).

User Defined:

18 user defined fields are provided on line items.

These fields are useful for informing operators about parts being measured, like materials, colors, hinging, handing instructions, etc. Additionally, these fields are useful for printing data like barcodes and instructions for downstream processes.

These fields can refer to any arbitrary data, and seen by operators when marked as viable.

These fields are also included in CSV output and can be printed on part labels and pack lists.

Label and Report Printing

ProCAB QC has the ability to print labels and pack lists with system data and customized templates.

When enabled, part labels will be printed via the configured label printer automatically on measurement. Likewise, when enabled, pack lists will be printed via the configured report printer upon completion of an order. Pack lists can be printed, saved to a PDF, and/or sent via email to the receiving customer.

Enable printing under Measurement Options in the System Configuration, and set the printer devices under Interface Hardware. Once configured, the templates can be edited using the buttons in System Settings.

Some templates are special and are referred to internally by ProCAB QC. These templates must remain available and cannot be renamed.

- Default Pack List.repx

The default pack list template. This will be used when no custom template is defined in an order, or as a fallback.

- Incomplete Order Report.repx

The pack list template used when an order is processed as incomplete.

- Default Part Label.repx

The default part label template. This will be used when no custom template is defined in an order, or as a fallback.

- Finish defect label.repx

The part label template used when the “Finish Defect” button is pressed for a defect in the finish of the part. Defects are labeled with the measured dimensions at the table, and not enrolled as a completed part.

- Out of Tolerance defect label.repx

The part label template used when the part measured is out of tolerance in width, height, angle, or depth. Defects are labeled with the measured dimensions at the table, and not enrolled as a completed part.

- Out of Square defect label.repx

The part label template used when the “Out of Square Defect” button is pressed for an error in the squareness in the part. Defects are labeled with the measured dimensions at the table, and not enrolled as a completed part.

- Miscellaneous defect label.repx

The part label template used when the “Misc Defect” button is pressed for some other error in the part, for example a hinge pocket hasn’t been milled out. Defects are labeled with the

measured dimensions at the table, and not enrolled as a completed part.

Controlling Printing via CSV Templates

CSV orders are able to control printing functions for pack list and part labels. Using the Pack List and Part Label mapping in the csv template, a CSV file can define the printing template file for use. When the “By Template” mode is used in the Measurement Options, the presence or absence of these fields determines whether printing occurs in this order.

Printing of labels and pack list can be defined as one of the following; See *Measurement Options* (page 19) for more information.

- Never

Never print. This option disables the printing feature entirely.

- Always

Always print. This will use the template selected in the order data, falling back to the default template if it’s not defined.

- By Template

Print only for orders that define the print template. To use the default template, the name of the default template must still be defined.

To define the print templates, open the order template editor and define the cell/column for the label and/or report print templates. Then in that cell/column of your order CSV, include the file name of the print template *without* the *.repx* file extension.

The requirement to map the print template by the order template allows operators to determine whether an order should print by which order template is used for import. Two otherwise identical order templates can be named “Order printing” and “Order no printing”, where the printing template defined the print templates.

Printing Template Editor

The editor is third party software, a more complete manual from the authors of this tool can be found on their website here: <https://devexpress.github.io/dotnet-eud/reporting-for-desktop/articles/report-designer/report-designer-for-winforms.html>

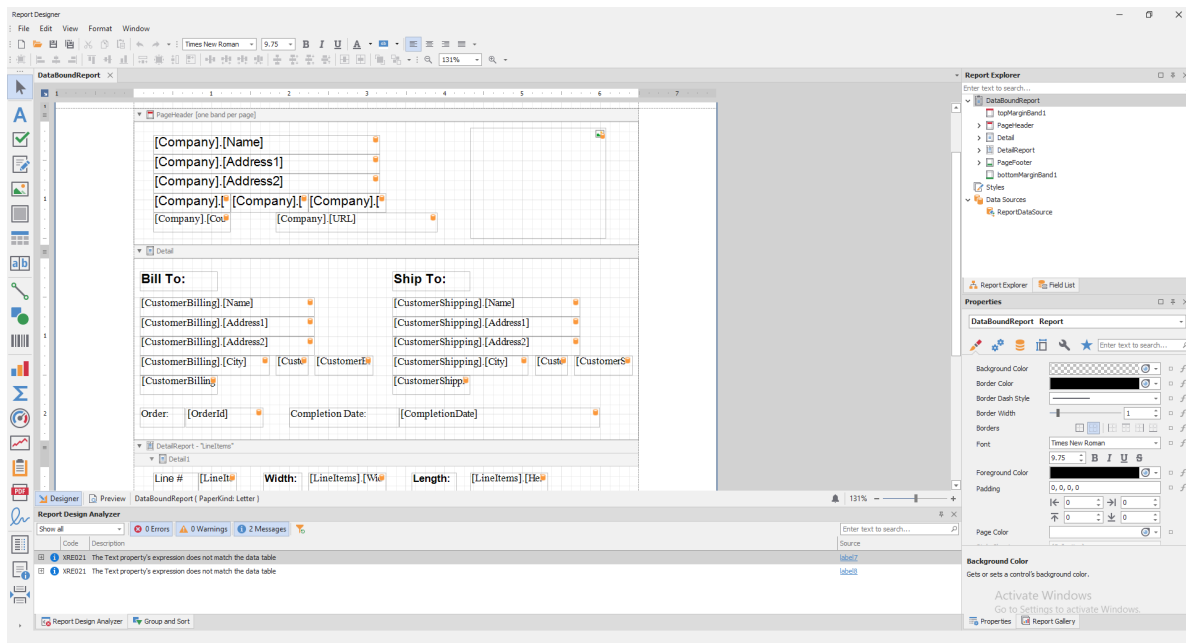
To open the template editor, open the System Settings and click the button to Edit Report Templates or Edit Part Label Templates. The first launch of the template editor may take a couple minutes, please be patient.

Sample data is preloaded into the template editor, so you can test your templates with the print preview option.

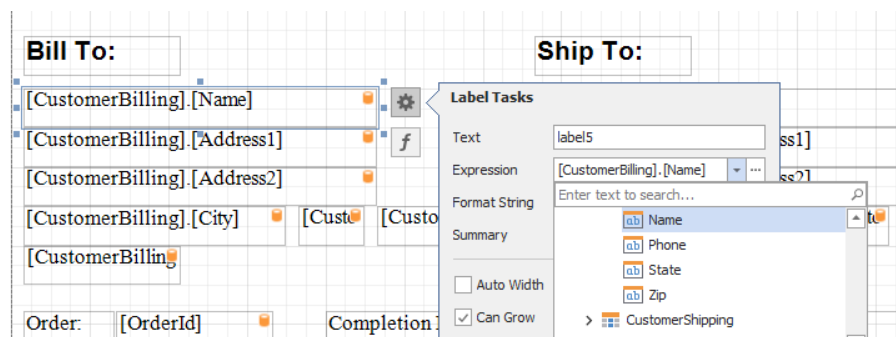
The print template editor may allow you to add additional data sources, this is recommended against. ProCAB QC may not have the capacity to fulfill these sources in the field, required libraries may be absent causing undefined behavior, or future updates to ProCAB QC may break any associations made by the editor.

Once the report editor has opened, open the template you would like to edit and be sure to save over the template file you intended to edit. ProCAB QC can use any number of templates, so long as the file name matches what's defined in the order.

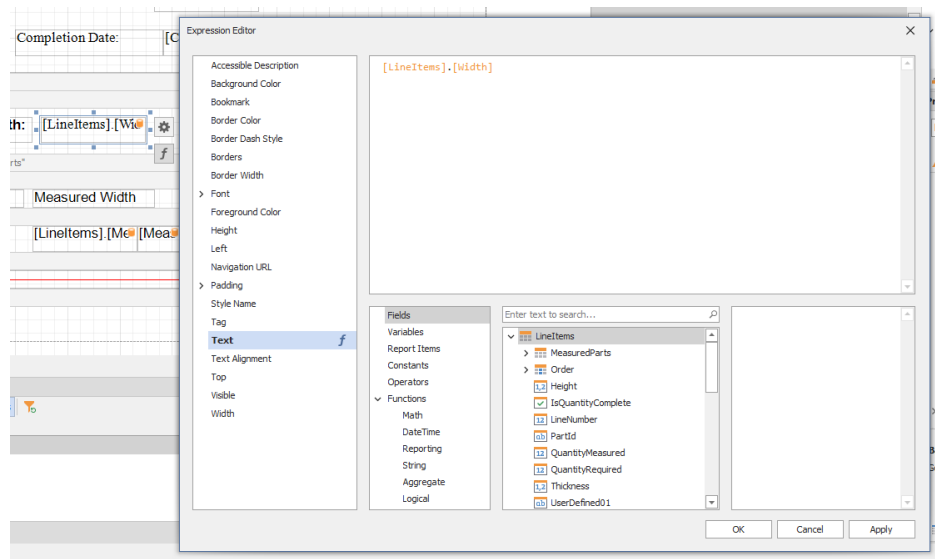
Quick Editor Guide



The template editor uses bands to combine the list-based data of an order. Each order has a list of line items, and each line item has a list of measured parts. Each band has the bindings filled with data, bands for lists repeat for each item.



To change the data bound to a label, select the label, properties, then set the Expression to the field you want.



For more complex bindings (string manipulation, math, etc), use the Expression Editor. This acts a lot like functions for cells in Microsoft Excel.

To include symbolic data like barcodes or QR Codes, use the barcode tool in the left toolbar to insert an element, and bind the expression to some data.

Symbology

The format for the data to be encoded to. The default Code 128 is very compatible but not very dense. Other symbologies can be used to encode the data, as not all symbologies support features like lowercase letters, unicode, or some special characters.

Symbology can also set the type of symbol, QR Code GS1 sets the symbol to be a QR Code instead of a barcode. Many 1 and 2 dimensional symbols can be used in this way.

Module/Auto Module

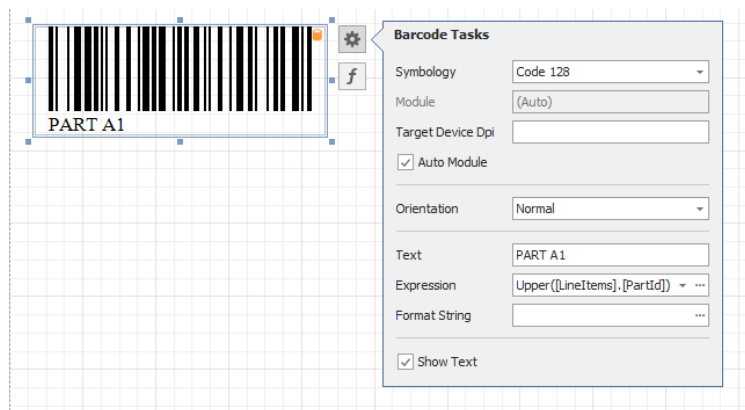
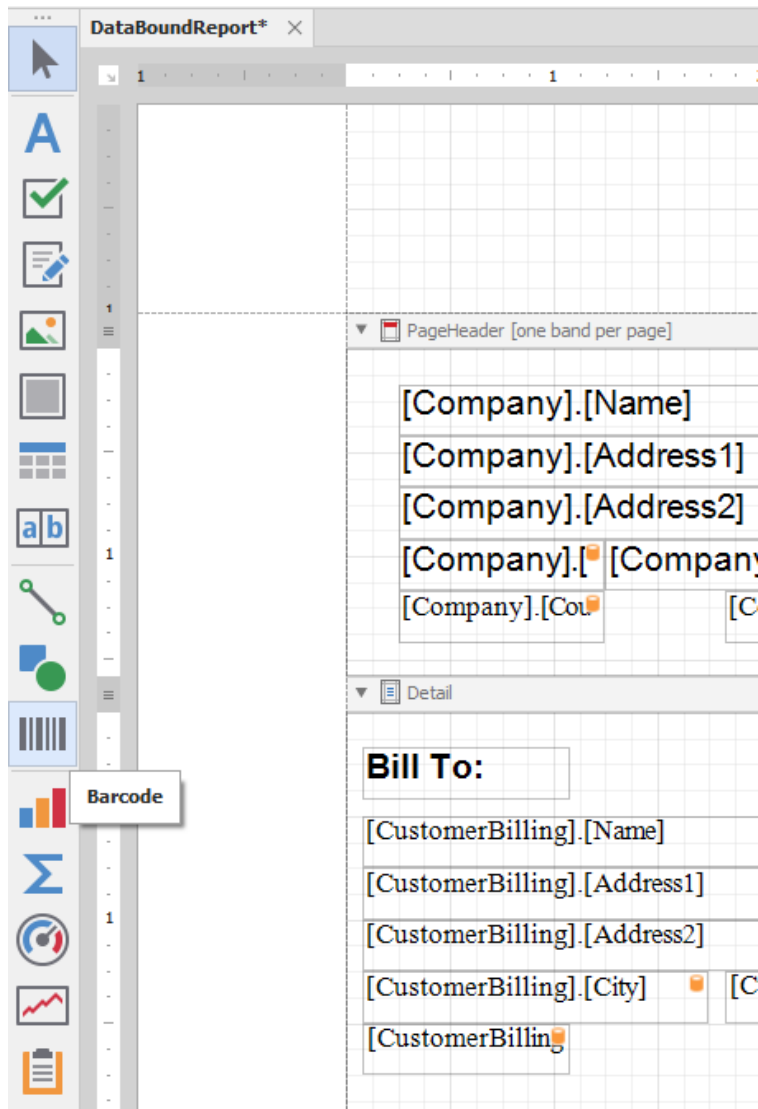
The module refers to the scale of the symbol. Larger modules mean larger symbols.

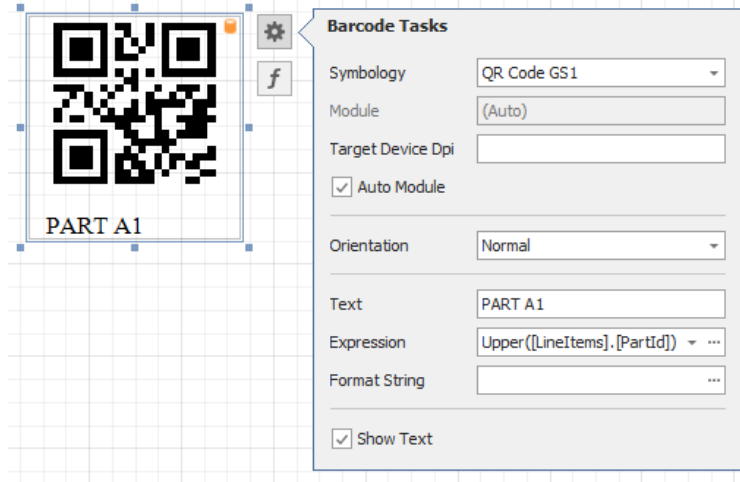
If the data in the bound field is always the same size, you can chose a good module size for your typesetting. Else, it is recommended to use Auto Module to automatically fit the symbol to the defined space

Orientation

To place a barcode vertically instead of horizontally, set this to “Rotate to the Left” or “Rotate to the Right”.

If you have issues creating your preferred print templates, you can [Contact Us](#) (page 40) for help.





Contact Us

For technical support, contact us at

<mailto://customerservice@proscale.com>²

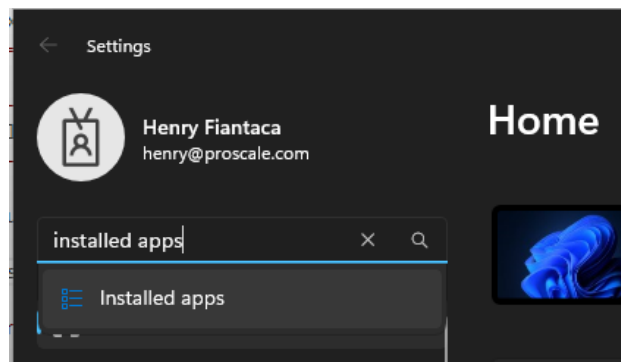
or

+1 828 654 7920 Monday-Friday 8:00AM to 5:00PM Eastern Time

Appendix

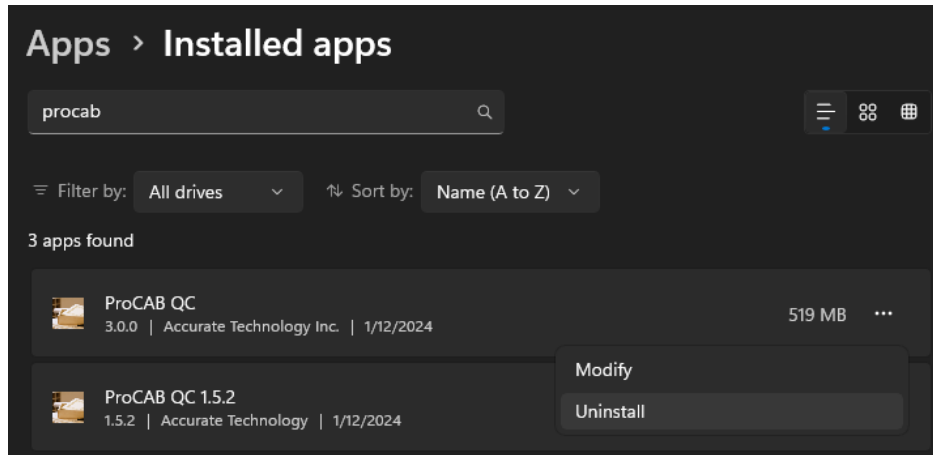
Uninstalling ProCAB QC

Before uninstalling, if you would like to transfer your license to another machine, follow the instructions in *Transfer ProCAB QC License to Another Machine* (page 41).



To uninstall ProCAB QC, go to the machine's Settings and search for "Installed Apps"

² //customerservice@proscale.com

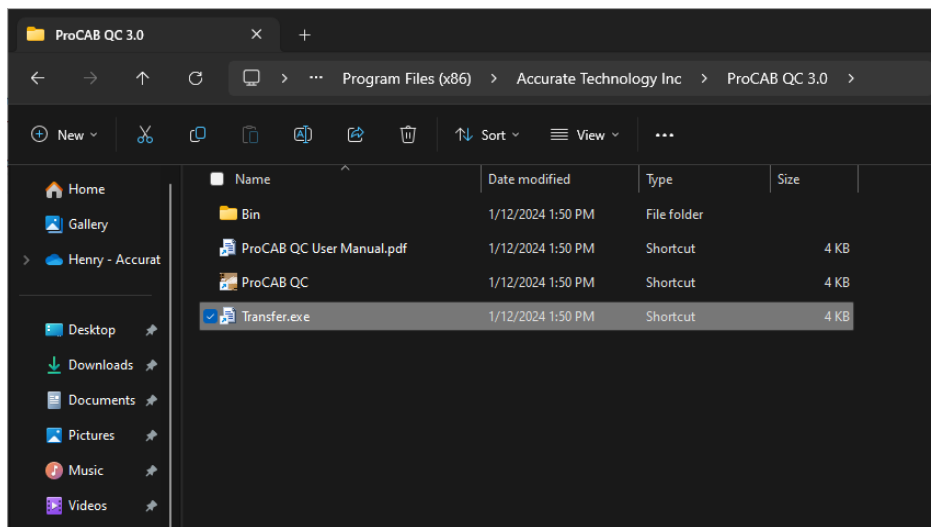


Search for ProCAB QC. Click the kebab next to ProCAB QC, then “Uninstall”. Confirm the uninstallation.

There are some files left in %APPDATA%\Accurate Technology Inc\ProCAB QC, you can delete these files *only* if you want to destroy all data associated with ProCAB QC. Deleting these files will delete your configuration, settings, templates, in-process orders, and completed orders.

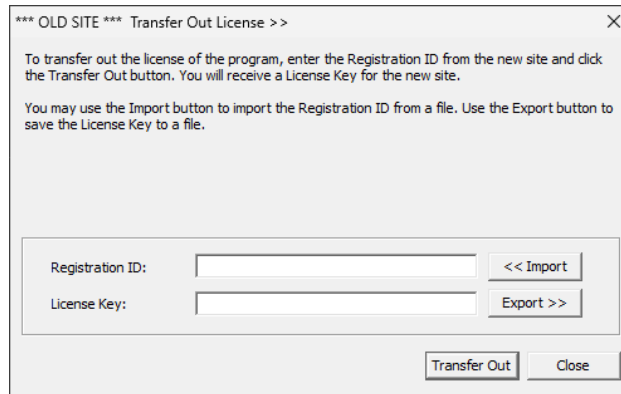
Transfer ProCAB QC License to Another Machine

Install ProCAB QC (page 12) on the new machine and take note of the registration ID.



Using the file explorer, navigate to the ProCAB QC install directory at C:\Program Files (x86)\Accurate Technology Inc\ProCAB QC 3.0. Launch the Transfer.exe utility.

Put the registration ID of the new machine into the transfer tool and click “Transfer Out”. This will provide an license key for the new machine *and* deactivate this machine.



Record the license key! Once this dialog closes, the key cannot be regenerated. Use the license key on the new machine to activate.

To keep your data on the new machine, copy the contents of %APPDATA%\Accurate Technology Inc\ProCAB QC to the new machine. Some domain servers already do this.

If necessary, copy/remap any folders configured on the old machine.

Third Party Software Licenses

Microsoft .NET8 LTS

MIT License

Copyright (c) 2024 Microsoft

Permission is hereby granted, free of charge, to any person obtaining a copy of this software and associated documentation files (the “Software”), to deal in the Software without restriction, including without limitation the rights to use, copy, modify, merge, publish, distribute, sublicense, and/or sell copies of the Software, and to permit persons to whom the Software is furnished to do so, subject to the following conditions:

The above copyright notice and this permission notice (including the next paragraph) shall be included in all copies or substantial portions of the Software.

THE SOFTWARE IS PROVIDED “AS IS”, WITHOUT WARRANTY OF ANY KIND, EXPRESS OR IMPLIED, INCLUDING BUT NOT LIMITED TO THE WARRANTIES OF MERCHANTABILITY, FITNESS FOR A PARTICULAR PURPOSE AND NONINFRINGEMENT. IN NO EVENT SHALL THE AUTHORS OR COPYRIGHT HOLDERS BE LIABLE FOR ANY CLAIM, DAMAGES OR OTHER LIABILITY, WHETHER IN AN ACTION OF CONTRACT, TORT OR OTHERWISE, ARISING FROM, OUT OF OR IN CONNECTION WITH THE SOFTWARE OR THE USE OR OTHER DEALINGS IN THE SOFTWARE.

Microsoft Entity Framework Core

MIT License

Copyright (c) 2024 Microsoft

Permission is hereby granted, free of charge, to any person obtaining a copy of this software and associated documentation files (the “Software”), to deal in the Software without restriction, including without limitation the rights to use, copy, modify, merge, publish, distribute, sublicense, and/or sell copies of the Software, and to permit persons to whom the Software is furnished to do so, subject to the following conditions:

The above copyright notice and this permission notice (including the next paragraph) shall be included in all copies or substantial portions of the Software.

THE SOFTWARE IS PROVIDED “AS IS”, WITHOUT WARRANTY OF ANY KIND, EXPRESS OR IMPLIED, INCLUDING BUT NOT LIMITED TO THE WARRANTIES OF MERCHANTABILITY, FITNESS FOR A PARTICULAR PURPOSE AND NONINFRINGEMENT. IN NO EVENT SHALL THE AUTHORS OR COPYRIGHT HOLDERS BE LIABLE FOR ANY CLAIM, DAMAGES OR OTHER LIABILITY, WHETHER IN AN ACTION OF CONTRACT, TORT OR OTHERWISE, ARISING FROM, OUT OF OR IN CONNECTION WITH THE SOFTWARE OR THE USE OR OTHER DEALINGS IN THE SOFTWARE.

SQLite

Public Domain

Quickenshtein

MIT License

Copyright (c) 2020 James Turner

Permission is hereby granted, free of charge, to any person obtaining a copy of this software and associated documentation files (the “Software”), to deal in the Software without restriction, including without limitation the rights to use, copy, modify, merge, publish, distribute, sublicense, and/or sell copies of the Software, and to permit persons to whom the Software is furnished to do so, subject to the following conditions:

The above copyright notice and this permission notice shall be included in all copies or substantial portions of the Software.

THE SOFTWARE IS PROVIDED “AS IS”, WITHOUT WARRANTY OF ANY KIND, EXPRESS OR IMPLIED, INCLUDING BUT NOT LIMITED TO THE WARRANTIES OF MERCHANTABILITY, FITNESS FOR A PARTICULAR PURPOSE AND NONINFRINGEMENT. IN NO EVENT SHALL THE AUTHORS OR COPYRIGHT HOLDERS BE LIABLE FOR ANY CLAIM, DAMAGES OR OTHER LIABILITY, WHETHER IN AN ACTION OF CONTRACT,

TORT OR OTHERWISE, ARISING FROM, OUT OF OR IN CONNECTION WITH THE SOFTWARE OR THE USE OR OTHER DEALINGS IN THE SOFTWARE.

DevExpress WinForms Controls

DEVELOPER EXPRESS INC DEVEXPRESS WinForms Controls Copyright (C) 2000-2024 Developer Express Inc.

Last revised November, 2023

END-USER LICENSE AGREEMENT FOR ALL SOFTWARE DEVELOPMENT PRODUCT(S) INCLUDED IN THIS DISTRIBUTION

IMPORTANT - PLEASE READ THIS END-USER LICENSE AGREEMENT (“AGREEMENT”) CAREFULLY BEFORE DOWNLOADING OR USING THE SOFTWARE DEVELOPMENT PRODUCT(S) INCLUDED IN THIS DISTRIBUTION/INSTALLATION.

This Developer Express Inc (“DEVEXPRESS”) AGREEMENT constitutes a legally binding agreement between you or the business and/or entity which you represent (“You” or “LICENSEE”) and DEVEXPRESS for all DEVEXPRESS products, frameworks, widgets, source code, demos, intermediate files, media, printed materials, and documentation (“SOFTWARE DEVELOPMENT PRODUCT(S)”) included in this distribution/installation.

By purchasing, installing, copying, or otherwise using the SOFTWARE DEVELOPMENT PRODUCT(S), you acknowledge that you have read this AGREEMENT and you agree to be bound by its terms and conditions. If you are representing a business and/or entity, you acknowledge that you have the legal authority to bind the business and/or entity you are representing to all the terms and conditions of this AGREEMENT.

If you do not agree to any of the terms and conditions of this AGREEMENT or if you do not have the legal authority to bind the business and/or entity you are representing to any of the terms and conditions of this AGREEMENT, DO NOT INSTALL, COPY, USE, EVALUATE, OR REPLICATE IN ANY MANNER, ANY PART, FILE OR PORTION OF THE SOFTWARE DEVELOPMENT PRODUCT(S).

This AGREEMENT is the entire agreement between DEVEXPRESS and LICENSEE concerning its subject matter (including the license, access, and use of the SOFTWARE DEVELOPMENT PRODUCT(S)), and supersedes all prior and contemporaneous agreements, proposals, or representations, written or oral, concerning its subject matter. The parties agree that any term or condition stated in a LICENSEE quote, bid, purchase order, or in any other LICENSEE terms or order documentation (collectively “LICENSEE DOCUMENTATION”) is void. In the event of any conflict or inconsistency between the terms of this AGREEMENT and any LICENSEE DOCUMENTATION, the terms of this AGREEMENT shall prevail.

All SOFTWARE DEVELOPMENT PRODUCT(S) is licensed, not sold.

1. GRANT OF LICENSE.

Subject to all the terms and conditions of this AGREEMENT, DEVEXPRESS grants LICENSEE a non-exclusive, non-transferable license to install and use the SOFTWARE DEVELOPMENT PRODUCT(S) included in this distribution as authorized in sections 1.1 through 1.5 below:

1.1 INDIVIDUAL USE LICENSE.

If you are an individual, you may install, copy, and use the SOFTWARE DEVELOPMENT PRODUCT(S) by purchasing a 12 month subscription from DEVEXPRESS or its authorized resellers, in accordance with Section 9 of this AGREEMENT.

1.2 BUSINESS AND GOVERNMENT USE LICENSE.

DEVEXPRESS licenses the SOFTWARE DEVELOPMENT PRODUCT(S) on a per-developer basis. If you represent a business and/or entity, you or your employees may install, copy, and use the SOFTWARE DEVELOPMENT PRODUCT(S) by purchasing a 12 month subscription from DEVEXPRESS or its authorized resellers for each developer using the SOFTWARE DEVELOPMENT PRODUCT(S), in accordance with Section 9 of this AGREEMENT. The number of licensed developers using the SOFTWARE DEVELOPMENT PRODUCT(S) must equal or be less than the number of seats purchased from DEVEXPRESS or its authorized resellers.

1.3 COMPLIMENTARY USE LICENSE.

If the SOFTWARE DEVELOPMENT PRODUCT(S) you have obtained is marked as “COMPLIMENTARY” or “FREE”, you may install and use the SOFTWARE DEVELOPMENT PRODUCT(S).

DEVEXPRESS reserves the right to discontinue at its discretion and without advance notice, the availability of COMPLIMENTARY or FREE versions of the SOFTWARE DEVELOPMENT PRODUCT(S) or its constituent parts at any time.

1.4 THIRTY (30) DAY EVALUATION (TRIAL) USE LICENSE.

If the SOFTWARE DEVELOPMENT PRODUCT(S) you have obtained is marked as a “TRIAL” or “EVALUATION,” you may install one copy of the SOFTWARE DEVELOPMENT PRODUCT(S) for evaluation purposes only, for a period of 30 calendar days from the date of installation (“EVALUATION PERIOD”). Upon expiration of the EVALUATION PERIOD, the SOFTWARE DEVELOPMENT PRODUCT(S) must be uninstalled and all copies destroyed.

You MAY NOT CREATE applications or begin software projects using the SOFTWARE DEVELOPMENT PRODUCT(S) under the terms of the THIRTY (30) DAY EVALUATION (TRIAL) USE LICENSE.

You MAY NOT REDISTRIBUTE files in the SOFTWARE DEVELOPMENT PRODUCT(S) distribution if using an evaluation or trial version of the SOFTWARE DEVELOPMENT PRODUCT(S).

1.5 PRE-RELEASE SOFTWARE.

SOFTWARE DEVELOPMENT PRODUCT(S) marked as PRE-RELEASE (including but not limited to the designation of Alpha, Beta, Community Technology Preview “CTP”, or Release Candidate “RC”) may contain deficiencies and as such, should not be considered for use or integrated in any mission critical application.

DEVEXPRESS may, at its sole discretion, discontinue availability of the PRE-RELEASE software, limit or modify PRE-RELEASE software functionality, or eliminate SUPPORT SERVICES for the PRE-RELEASE software at any time. For a complete list of PRE-RELEASE software, refer to the following webpage: <https://www.devexpress.com/pre-release>

2. LIMITATIONS ON REVERSE ENGINEERING, DECOMPILATION, AND DISASSEMBLY.

You may not reverse engineer, decompile, create derivative works or disassemble the SOFTWARE DEVELOPMENT PRODUCT(S). If the SOFTWARE DEVELOPMENT PRODUCT(S) is purchased by you with the intent to reverse engineer, decompile, create derivative works, or the exploitation and unauthorized transfer of any DEVEXPRESS intellectual property and trade secrets, to include any exposed methods or source code where provided, no licensed right of use shall exist and any PRODUCT(s) created as a result shall be judged illegal by definition. Any sale or resale of intellectual property or created derivatives so obtained will be prosecuted to the fullest extent of all local, federal and international law.

3. SEPARATION OF COMPONENTS.

The SOFTWARE DEVELOPMENT PRODUCT(S) is licensed as a single PRODUCT(S). The SOFTWARE DEVELOPMENT PRODUCT(S) and its constituent parts and any provided redistributables may not be reverse engineered, decompiled, disassembled or separated for use on more than one computer, nor placed for distribution, sale, or resale as individual creations by LICENSEE. The provision of source code, if included with the SOFTWARE DEVELOPMENT PRODUCT(S), does not constitute transfer of any legal rights to such code, and resale or distribution of all or any portion of all source code and intellectual property will be prosecuted to the fullest extent of all applicable local, federal and international laws. All DEVEXPRESS libraries, source code, redistributables and other files remain DEVEXPRESS's exclusive property. You may not distribute any files, except those that DEVEXPRESS has expressly designated as REDISTRIBUTABLE(S).

4. RENTAL.

You may not rent, lease, or lend the SOFTWARE DEVELOPMENT PRODUCT(S).

5. TRANSFER.

You may NOT permanently or temporarily transfer ANY of your rights under this AGREEMENT to any individual or business or government entity without prior written approval from DEVEXPRESS. Regardless of any modifications which you make and regardless of how you might compile, link, and/or package your programs, under no circumstances may the libraries, Redistributables, and/or files included in the SOFTWARE DEVELOPMENT PRODUCT(S) (including any portions thereof) be used for developing programs by anyone other than you. Only you as the LICENSEE have the right to use the libraries, redistributables, or other files of the SOFTWARE DEVELOPMENT PRODUCT(S) (or any portions thereof) for developing programs created with the SOFTWARE DEVELOPMENT PRODUCT(S). You may not share copies of the Redistributables with other co-developers. You may not reproduce or distribute any DEVEXPRESS documentation without the permission of DEVEXPRESS.

6. REDISTRIBUTION.

The SOFTWARE DEVELOPMENT PRODUCT(s) may include certain files (“REDISTRIBUTABLE(s)”) intended for distribution by you to the users of software applications which you create. Redistributables include, for example, those files identified in printed or on-line documentation as redistributable files or those files preselected for deployment by an install utility provided with the SOFTWARE DEVELOPMENT PRODUCT(S) (if any). In all circumstances, the REDISTRIBUTABLES for the SOFTWARE DEVELOPMENT PRODUCT(S) are only those files specifically designated as such by DEVEXPRESS.

AT NO TIME MAY LICENSEE CREATE ANY TOOL, REDISTRIBUTABLE, OR PRODUCT THAT DIRECTLY OR INDIRECTLY COMPETES WITH ANY DEVEXPRESS PRODUCT(S), INCLUDING BUT NOT LIMITED TO THE SOFTWARE DEVELOPMENT PRODUCT(S), BY UTILIZING ALL OR ANY PORTION OF THE DEVEXPRESS SOFTWARE DEVELOPMENT PRODUCT(S).

Distribution by the LICENSEE of any design-time tools (EXE’s or DLL’s), executables, and source code distributed to LICENSEE by DEVEXPRESS as part of this SOFTWARE DEVELOPMENT PRODUCT(S) and not explicitly identified as a redistributable file is strictly prohibited. The LICENSEE shall not develop software applications that provide an application programming interface to the SOFTWARE DEVELOPMENT PRODUCT(S) or the SOFTWARE DEVELOPMENT PRODUCT(S) as modified.

The LICENSEE may NOT distribute the SOFTWARE DEVELOPMENT PRODUCT(S), in any format, to others for development or application compilation purposes.

If you have purchased a 12 month subscription as described in Section 9 of this AGREEMENT, or have obtained a COMPLIMENTARY USE LICENSE as described in Section 1.3 of this AGREEMENT, you may reproduce and distribute copies of the REDISTRIBUTABLES, provided that such copies are made from the original copy of the REDISTRIBUTABLES included with the SOFTWARE DEVELOPMENT PRODUCT(S) or modified versions of the REDISTRIBUTABLES which are provided to you by DEVEXPRESS or those which you create. Copies of REDISTRIBUTABLES may only be distributed with and for the sole purpose of executing application programs permitted under this AGREEMENT that you have created using the SOFTWARE DEVELOPMENT PRODUCT(S).

The complete list of REDISTRIBUTABLES under this AGREEMENT is as follows:

DevExpress.BonusSkins.v23.2.dll	DevExpress.Charts.v23.2.Core.dll	DevExpress.CodeParser.v23.2.dll	DevExpress.Data.v23.2.dll	DevExpress.Data.Desktop.v23.2.dll
DevExpress.DataAccess.v23.2.dll	DevExpress.DataAccess.v23.2.UI.dll	DevExpress.DataVisualization.v23.2.Core.dll	DevExpress.Diagram.v23.2.Core.dll	
DevExpress.Dialogs.v23.2.Core.dll	DevExpress.Drawing.v23.2.dll	DevExpress.Drawing.v23.2.Skia.dll	DevExpress.Images.v23.2.dll	DevExpress.Map.v23.2.Core.dll
DevExpress.Mvvm.v23.2.DataModel.dll	DevExpress.Mvvm.v23.2.DataModel.EF6.dll	DevExpress.Mvvm.v23.2.DataModel.EFCore.dll	DevExpress.Mvvm.v23.2.DataModel.WCF.dll	
DevExpress.Mvvm.v23.2.dll	DevExpress.Mvvm.v23.2.ViewModel.dll	DevExpress.Office.v23.2.Core.dll	DevExpress.Pdf.v23.2.Core.dll	DevExpress.Pdf.v23.2.Drawing.dll
DevExpress.Pdf.v23.2.SkiaRenderer.dll	DevExpress.PivotGrid.v23.2.Core.dll	DevExpress.Printing.v23.2.Core.dll	DevExpress.RichEdit.v23.2.Core.dll	DevExpress.RichEdit.v23.2.Export.dll
DevExpress.Snap.v23.2.Core.dll	DevExpress.Snap.v23.2.dll			

DevExpress.Snap.v23.2.Extensions.dll DevExpress.Sparkline.v23.2.Core.dll DevExpress.SpellChecker.v23.2.Core.dll DevExpress.Spreadsheet.v23.2.Core.dll DevExpress.TreeMap.v23.2.Core.dll DevExpress.Utills.v23.2.dll DevExpress.Utills.v23.2.UI.dll DevExpress.Xpo.v23.2.dll DevExpress.Xpo.v23.2.Extensions.dll DevExpress.XtraBars.v23.2.dll DevExpress.XtraCharts.v23.2.dll DevExpress.XtraCharts.v23.2.Extensions.dll DevExpress.XtraCharts.v23.2.UI.dll DevExpress.XtraCharts.v23.2.Wizard.dll DevExpress.XtraDiagram.v23.2.dll DevExpress.XtraDialogs.v23.2.dll DevExpress.XtraEditors.v23.2.dll DevExpress.XtraGantt.v23.2.dll DevExpress.XtraGauges.v23.2.Core.dll DevExpress.XtraGauges.v23.2.Presets.dll DevExpress.XtraGauges.v23.2.Win.dll DevExpress.XtraGrid.v23.2.dll DevExpress.XtraLayout.v23.2.dll DevExpress.XtraMap.v23.2.dll DevExpress.XtraNavBar.v23.2.dll DevExpress.XtraPdfViewer.v23.2.dll DevExpress.XtraPivotGrid.v23.2.dll DevExpress.XtraPrinting.v23.2.dll DevExpress.XtraReports.v23.2.dll DevExpress.XtraReports.v23.2.CodeCompletion.dll DevExpress.XtraReports.v23.2.Extensions.dll DevExpress.XtraReports.v23.2.Service.dll DevExpress.XtraRichEdit.v23.2.dll DevExpress.XtraScheduler.v23.2.Core.dll DevExpress.XtraScheduler.v23.2.dll DevExpress.XtraScheduler.v23.2.Extensions.dll DevExpress.XtraScheduler.v23.2.GoogleCalendar.dll DevExpress.XtraScheduler.v23.2.Microsoft365Calendar.dll DevExpress.XtraScheduler.v23.2.Reporting.dll DevExpress.XtraScheduler.v23.2.Reporting.Extensions.dll DevExpress.XtraSpellChecker.v23.2.dll DevExpress.XtraSpreadsheet.v23.2.dll DevExpress.XtraTreeList.v23.2.dll DevExpress.XtraTreeMap.v23.2.dll DevExpress.XtraTreeMap.v23.2.UI.dll DevExpress.XtraVerticalGrid.v23.2.dll DevExpress.XtraWizard.v23.2.dll

Where applicable and/or available, localized language resources may be provided in the form of REDISTRIBUTABLE assemblies corresponding to the REDISTRIBUTABLE naming schemes listed in this AGREEMENT:

DevExpress.*.v23.2.resources.dll

LICENSEE MAY NOT REDISTRIBUTE any files in the SOFTWARE DEVELOPMENT PRODUCT(S) distribution if using an evaluation, trial, Not for Resale, or demo version of the SOFTWARE DEVELOPMENT PRODUCT(S).

7. COPYRIGHT.

All title and copyrights in and to the SOFTWARE DEVELOPMENT PRODUCT(S) (including but not limited to any DEVEXPRESS trademarks, copywritten images, demos, source code, intermediate files, packages, photographs, redistributables, animations, video, audio, music, text, and “applets” incorporated into the SOFTWARE DEVELOPMENT PRODUCT(S) the accompanying printed materials, and any copies of the SOFTWARE DEVELOPMENT PRODUCT(S)) are owned by DEVEXPRESS or its subsidiaries.

The SOFTWARE DEVELOPMENT PRODUCT(S) is protected by copyright laws and international treaty provisions and therefore, you must treat the SOFTWARE DEVELOPMENT PRODUCT(S) like any other copyrighted material except that you may install and use the SOFTWARE DEVELOPMENT PRODUCT(S) as described in this AGREEMENT.

8. OPEN SOURCE LIBRARIES.

The SOFTWARE DEVELOPMENT PRODUCT(S) found in this installation package may include or require certain third-party, open source components or libraries (“THE OPEN SOURCE LIBRARIES”).

Where applicable, DEVEXPRESS may include a “NOTICE” file to provide a list of THE OPEN SOURCE LIBRARIES required for certain portions of the documentation, sample source code, and other demo projects.

THE OPEN SOURCE LIBRARIES included in the SOFTWARE DEVELOPMENT PRODUCT(S) are done so pursuant to each individual open source library license and subject to the disclaimers and limitations on liability set forth in each open source library license.

The SOFTWARE DEVELOPMENT PRODUCT(S) may include external installation references for THE OPEN SOURCE LIBRARIES on their respective package management locations. These external locations may include, but are not limited to, NuGet or npm. Prior to installing THE OPEN SOURCE LIBRARIES, You are responsible for reviewing and agreeing to each associated license agreement accompanying a library, and any other sub-dependency required by that library.

Whether included as part of the SOFTWARE DEVELOPMENT PRODUCT(S) installation package, or referenced as an external dependency or requirement, THE OPEN SOURCE LIBRARIES are provided “AS IS”, WITHOUT WARRANTY OF ANY KIND, EXPRESS OR IMPLIED, INCLUDING BUT NOT LIMITED TO THE WARRANTIES OF MERCHANTABILITY, FITNESS FOR A PARTICULAR PURPOSE AND NONINFRINGEMENT. IN NO EVENT SHALL DEVEXPRESS, THE AUTHORS, OR COPYRIGHT HOLDERS BE LIABLE FOR ANY CLAIM, DAMAGES OR OTHER LIABILITY, WHETHER IN AN ACTION OF CONTRACT, TORT OR OTHERWISE, ARISING FROM, OUT OF OR IN CONNECTION WITH THE OPEN SOURCE LIBRARIES OR THE USE OF OTHER DEALINGS IN THE OPEN SOURCE LIBRARIES.

THE OPEN SOURCE LIBRARIES listed in this section are included in this SOFTWARE DEVELOPMENT PRODUCT(S) installation package.

Bouncy Castle (Open Source - The Bouncy Castle License) Copyright (C) 2000-2020 The Legion of the Bouncy Castle Inc. Portions of the Bouncy Castle Library used to support X.509, CMS (RFC 3852), and Time Stamp Protocol (RFC 3161). <https://github.com/bcgit/bc-csharp/blob/master/crypto/License.html>

Microsoft.Extensions.FileSystemGlobbing (Open Source – MIT License) Copyright (c) .NET Foundation and Contributors. All rights reserved. <https://github.com/dotnet/runtime/blob/main/LICENSE.TXT>

MSBuild Locator (Open Source – MIT License) Copyright (c) Microsoft Corporation. All rights reserved. <https://github.com/microsoft/MSBuildLocator/blob/master/LICENSE>

Reporting.Import (Open Source – MIT License) Copyright (c) 2018 Developer Express Inc. <https://github.com/DevExpress/Reporting.Import/blob/master/LICENSE>

System.Data.SQLite and System.Data.SQLite.EF6 (Open Source – Microsoft Public License) <https://system.data.sqlite.org/index.html/doc/trunk/www/copyright.wiki>

try-convert (OpenSource – MIT License) Copyright (c) .NET Foundation and Contributors. All rights reserved.

reserved. <https://github.com/dotnet/try-convert/blob/main/LICENSE.TXT>

9. TWELVE (12) MONTH SUBSCRIPTION AND UPDATES.

DEVEXPRESS licenses the SOFTWARE DEVELOPMENT PRODUCT(S) on a subscription basis. A subscription lasts for a 12 month period from the date of purchase. LICENSEE will be eligible to receive all major and minor updates for the SOFTWARE DEVELOPMENT PRODUCT(S) during this 12 month period. Upon expiration of a subscription (12 months, plus 1 day after original purchase date), LICENSEE can optionally renew the SOFTWARE DEVELOPMENT PRODUCT(S) subscription for an additional 12 month period (and each subsequent year thereafter) in order to continue receiving major and minor updates of the SOFTWARE DEVELOPMENT PRODUCT(S) from DEVEXPRESS.

If the SOFTWARE DEVELOPMENT PRODUCT(S) is labeled as an update, you must be properly licensed to obtain the updated SOFTWARE DEVELOPMENT PRODUCT(S). A SOFTWARE DEVELOPMENT PRODUCT(S) labeled as an update replaces and/or supplements the SOFTWARE DEVELOPMENT PRODUCT(S) that formed the basis for your eligibility for the update, and together constitutes a single PRODUCT(S). You may only use the updated PRODUCT(S) in accordance with all the terms of this AGREEMENT.

Pricing for the 12 month SOFTWARE DEVELOPMENT PRODUCT(S) subscription and any subsequent renewal of the subscription are listed on devexpress.com and subject to change with or without notice.

REDISTRIBUTABLES referenced in this AGREEMENT are dependent upon the type of 12 month subscription purchased from DEVEXPRESS.

DEVEXPRESS reserves the right to discontinue the SOFTWARE DEVELOPMENT PRODUCT(S) or its constituents, at any time.

DEVEXPRESS also reserves the right to enforce licensing and reduce software piracy through license validation and verification mechanisms.

10. DOWNLOAD of SOFTWARE DEVELOPMENT PRODUCT(S).

The SOFTWARE DEVELOPMENT PRODUCT(S) will be made available for download from DevExpress.com exclusively.

11. EXPORT RESTRICTIONS.

DEVEXPRESS expressly complies with all export restrictions imposed by the government of the United States of America. You, as LICENSEE, must agree not to export or re-export the SOFTWARE DEVELOPMENT PRODUCT(S) within any created application to any country, person, entity or end user subject to U.S.A. export restrictions. Restricted countries currently include, but are not necessarily limited to Cuba, Iran, North Korea, Sudan, Syria, and Venezuela. You warrant and represent that neither the U.S.A. Bureau of Export Administration nor any other federal agency has suspended, revoked or denied your export privileges.

12. DISCLAIMER OF WARRANTY.

DEVEXPRESS expressly disclaims any warranty for the SOFTWARE DEVELOPMENT PRODUCT(S). THE SOFTWARE DEVELOPMENT PRODUCT(S) AND ANY RELATED DOCUMENTATION IS PROVIDED “AS IS” WITHOUT WARRANTY OF ANY KIND, EITHER EXPRESS OR IMPLIED, INCLUDING, WITHOUT LIMITATION, THE IMPLIED WARRANTIES OF MERCHANTABILITY, FITNESS FOR A PARTICULAR PURPOSE, OR NONINFRINGEMENT. DEVEXPRESS DOES NOT WARRANT, GUARANTEE, OR MAKE ANY REPRESENTATIONS REGARDING THE USE, OR THE RESULTS OF THE USE, OF THE SOFTWARE DEVELOPMENT PRODUCT(S) IN TERMS OF CORRECTNESS, ACCURACY, RELIABILITY, OR OTHERWISE. THE ENTIRE RISK ARISING OUT OF USE OR PERFORMANCE OF THE SOFTWARE DEVELOPMENT PRODUCT(S) REMAINS WITH YOU. No oral or written information or advice given by DEVEXPRESS or its employees shall create a warranty or in any way increase the scope of this warranty.

13. LIMITATIONS ON LIABILITY.

To the maximum extent permitted by applicable law, in no event shall DEVEXPRESS be liable for any special, incidental, indirect, or consequential damages whatsoever (including, without limitation, damages for loss of business profits, business interruption, loss of business information, or any other pecuniary loss) arising out of the use of or inability to use the SOFTWARE DEVELOPMENT PRODUCT(S) or the provision of or failure to provide SUPPORT SERVICES, even if DEVEXPRESS has been advised of the possibility of such damages.

LICENSEE understands that the SOFTWARE DEVELOPMENT PRODUCT(S) may produce inaccurate results because of a failure or fault within the SOFTWARE DEVELOPMENT PRODUCT(S) or failure by LICENSEE to properly use and or deploy the SOFTWARE DEVELOPMENT PRODUCT(S). LICENSEE assumes full and sole responsibility for any use of the SOFTWARE DEVELOPMENT PRODUCT(S), and bears the entire risk for failures or faults within the SOFTWARE DEVELOPMENT PRODUCT(S). You agree that regardless of the cause of failure or fault or the form of any claim, YOUR SOLE REMEDY AND DEVEXPRESS’S SOLE OBLIGATION SHALL BE GOVERNED BY THIS AGREEMENT AND IN NO EVENT SHALL DEVEXPRESS’S LIABILITY EXCEED THE PRICE PAID TO DEVEXPRESS FOR THE SOFTWARE DEVELOPMENT PRODUCT(S). This Limited Warranty is void if failure of the SOFTWARE DEVELOPMENT PRODUCT(S) has resulted from accident, abuse, alteration, unauthorized use or misapplication of the SOFTWARE DEVELOPMENT PRODUCT(S).

14. INDEMNIFICATION.

You hereby agree to indemnify DEVEXPRESS and its officers, directors, employees, agents, and representatives from each and every demand, claim, loss, liability, or damage of any kind, including actual attorney’s fees, whether in tort or contract, that it or any of them may incur by reason of, or arising out of, any claim which is made by any third party with respect to any breach or violation of this AGREEMENT by you or any claims based on the Applications and the SOFTWARE DEVELOPMENT PRODUCT(S) included herein, including without limitation any claims asserted by your end user customers.

15. U.S. GOVERNMENT RESTRICTED RIGHTS.

For SOFTWARE DEVELOPMENT PRODUCT(S) purchased, installed, copied or otherwise used

on behalf of any United States Government agency or department (“US GOVT”), US GOVT agrees that the SOFTWARE DEVELOPMENT PRODUCT(S) are acquired with restricted rights according to the following:

For the Department of Defense: The SOFTWARE DEVELOPMENT PRODUCT(S) is “Commercial Computer Software” as defined in Clause 252.227-7013(c)(1) of the DFARS.

For all agencies or departments: US GOVT rights in the SOFTWARE DEVELOPMENT PRODUCT(S) is defined in Clause 52.227-19(c)(2) of the FAR.

The manufacturer of the SOFTWARE DEVELOPMENT PRODUCT(S) is: Developer Express, Inc., 330 N. Brand Blvd Suite 370, Glendale, CA 91203.

16. SUPPORT SERVICES.

DEVEXPRESS may provide you with support services related to the SOFTWARE DEVELOPMENT PRODUCT(S) (“SUPPORT SERVICES”). Use of SUPPORT SERVICES is governed by DEVEXPRESS policies and programs described in the user manual, in “on line” documentation and/or other DEVEXPRESS provided materials. DEVEXPRESS may restrict or otherwise discontinue SUPPORT SERVICES provided to you if your use of SUPPORT SERVICES is deemed by DEVEXPRESS, in its sole and reasonable discretion, to be excessive and beyond the scope of fair use.

Any supplemental SOFTWARE DEVELOPMENT PRODUCT(S) provided to you as part of the SUPPORT SERVICES shall be considered part of the SOFTWARE DEVELOPMENT PRODUCT(S) and subject to the terms and conditions of this AGREEMENT. With respect to technical information you provide to DEVEXPRESS as part of the SUPPORT SERVICES, DEVEXPRESS may use such information for its business purposes, including for SOFTWARE DEVELOPMENT PRODUCT(S) support and development.

If the SOFTWARE DEVELOPMENT PRODUCT(S) you have obtained is marked as “COMPLIMENTARY” or “FREE”, or if your DEVEXPRESS SOFTWARE DEVELOPMENT PRODUCT(S) Subscription has expired or your DEVEXPRESS SOFTWARE DEVELOPMENT PRODUCT(S) license was revoked due to U.S. Treasury Department-related sanctions, DEVEXPRESS shall restrict the availability of SUPPORT SERVICES, and may discontinue applicable SUPPORT SERVICES at its sole discretion, without advance notice.

17. TERMINATION.

Without prejudice to any other rights or remedies, DEVEXPRESS will terminate this AGREEMENT upon your failure to comply with all the terms and conditions of this AGREEMENT. In such events, LICENSEE must destroy all copies of the SOFTWARE DEVELOPMENT PRODUCT(S) and all of its component parts including any related documentation, and must remove ANY and ALL use of DEVEXPRESS intellectual property from any applications distributed by LICENSEE, whether in native, altered or compiled states.

18. TAX.

DEVEXPRESS may be required by local, state, or national government laws, to collect sales or use tax from you. If DEVEXPRESS is not legally required to collect any applicable taxes at the time of

purchase, you should confirm that your local, state, or national government does not impose any sales or use tax on electronically delivered software. You are entirely liable for any such sales or use tax.

19. PERSONAL DATA.

All Information DEVEXPRESS collects from you is stored and maintained on servers utilizing reasonable and appropriate data security safeguards. DEVEXPRESS does not lend, lease, sell, or market information it obtains from its customers or those who provide us personally identifiable information. DEVEXPRESS does not disclose purchase information or licensing information to third parties.

DEVEXPRESS collects personally identifiable information whenever you purchase/license a DEVEXPRESS product or service. Information includes Name, Address, Phone Number, Email address, Payment Information, Product Purchases, Licenses Owned, Employee/Contact Details, etc. The information we collect allows DEVEXPRESS to communicate with you regarding upcoming product updates, new product releases, company news and other important business matters.

DEVEXPRESS does not wish to receive, act to procure, nor desire to solicit, confidential or proprietary materials and information from you through the use of the SOFTWARE DEVELOPMENT PRODUCT(S) or SUPPORT SERVICES. Any and all materials, attachments, or information submitted by you as part of error submissions, or divulged during chats, online discussions, Support Center submissions, or made available to DEVEXPRESS in any manner will be deemed NOT to be confidential by DEVEXPRESS. You acknowledge that submissions to DEVEXPRESS will not be considered confidential or proprietary and that DEVEXPRESS will be under no obligation to keep such information confidential.

Your election to use the SOFTWARE DEVELOPMENT PRODUCT(S) indicates your acceptance of the terms of this AGREEMENT. You are responsible for maintaining confidentiality of your username, password and other sensitive information. You are responsible for all activities that occur in your user account and in case of any unauthorized activity on your account, you agree to inform DEVEXPRESS immediately by any method listed on the DEVEXPRESS website's Contacts page. DEVEXPRESS is not responsible for any loss or damage to you or to any third party incurred as a result of any unauthorized access and/or use of your user account, or otherwise.

DEVEXPRESS may disclose or report Confidential Information in limited circumstances where it believes in good faith that disclosure is required under the law. For example, DEVEXPRESS may be required to disclose Confidential Information to cooperate with regulators or law enforcement authorities, to comply with a legal process such as a court order, subpoena, search warrant, or a law enforcement request. Additionally, if the ownership of all or substantially all of our business changes or we otherwise transfer assets relating to our business or the SOFTWARE DEVELOPMENT PRODUCT(S) to a third party, such as by merger, acquisition, bankruptcy proceeding or otherwise, we may transfer or sell your personal information to the new owner. In such a case, unless permitted otherwise by applicable law, your information would remain subject to the promises made in the applicable privacy policy unless you agree differently.

DEVEXPRESS's use of personal data is governed by the terms set forth in our comprehensive Privacy Policy: <https://www.devexpress.com/aboutus/privacy-policy.xml>

19.1 DEMO FEEDBACK

The Demo Feedback feature presented within the included demo applications of the SOFTWARE DEVELOPMENT PRODUCT(S), allows you to send feedback to DEVEXPRESS and, optionally, include any additional information to describe the specific compliment or concern you may have with regards to the demo application. Although Demo Feedback doesn't intentionally collect personally identifiable information, it is possible that such information might be captured in the feedback text you provide. DEVEXPRESS does not wish to receive such information nor will it use this information to identify you.

Except as otherwise described in this statement, Demo Feedback does not transmit personal information to DEVEXPRESS.

20. MISCELLANEOUS.

Where applicable, as part of the SOFTWARE DEVELOPMENT PRODUCT(S) installation, DEVEXPRESS may include and/or require the use of certain redistributable libraries made available in binary form by Microsoft under the terms and conditions of the following license agreements: Entity Framework 6 Runtime License ([https://msdn.microsoft.com/en-us/library/dn467385\(v=vs.113\).aspx](https://msdn.microsoft.com/en-us/library/dn467385(v=vs.113).aspx)).

No right of use or license is granted for the Map providers available in the SOFTWARE DEVELOPMENT PRODUCT. LICENSEE must obtain and follow the appropriate licensing terms and right of use set forth by each map provider.

When using OpenStreetMap data, you must read and understand the OpenStreetMap terms of use. Read the OpenStreetMap Legal FAQ. https://wiki.osmfoundation.org/wiki/Licence/Licence_and_Legal_FAQ

If using OpenStreetMap Tiles, you must read and understand the OpenStreetMap Tile Usage Policy. Read the OpenStreetMap Tile Policy. <https://operations.osmfoundation.org/policies/tiles/>

When using Bing Maps, you must read and understand Microsoft's terms of use. Read the Bing Maps Licensing and Pricing Information. <http://www.microsoft.com/maps/product/licensing.aspx>

Wherever applicable, the SOFTWARE DEVELOPMENT PRODUCT(S) may implement certain specification published by MBTiles, and made available under the Creative Commons Attribution 3.0 Unported (CC-BY) license. <https://github.com/mapbox/mbtiles-spec/blob/master/LICENSE>

This AGREEMENT shall be construed, interpreted and governed by the laws of the State of Nevada, U.S.A. This AGREEMENT gives you specific legal rights; you may have others that vary from state to state and from country to country.

This AGREEMENT may only be modified in writing signed by you and an authorized officer of Developer Express Inc. This AGREEMENT is the entire agreement between DEVEXPRESS and LICENSEE concerning its subject matter (including the license, access, and use of the SOFTWARE DEVELOPMENT PRODUCT(S), and supersedes all prior and contemporaneous agreements, proposals, or representations, written or oral, concerning its subject matter. The parties agree that any term or condition stated in a LICENSEE quote, bid, purchase order, or in any other LICENSEE terms or order documentation (collectively "LICENSEE DOCUMENTATION") is void. In the event of any conflict or inconsistency between the terms of this AGREEMENT and any LICENSEE DOCUMENTATION, the terms of this AGREEMENT shall prevail.

If any provision of this AGREEMENT is found void or unenforceable, the remainder will remain valid and enforceable according to its terms. If any remedy provided is determined to have failed for its essential purpose, all limitations of liability and exclusions of damages set forth in the Limited Warranty shall remain in effect.

DEVEXPRESS reserves all rights not specifically granted in this AGREEMENT.

Should you have any questions concerning this AGREEMENT, contact us directly in the United States at +1 (818) 844 3383, or write: Developer Express Inc. Legal department / 330 N. Brand Blvd Suite 370, Glendale, CA 91203.

All trademarks and registered trademarks are property of their respective owners.

DevExpress Reporting

DEVELOPER EXPRESS INC DEVEXPRESS Reporting for .NET Framework Copyright (C) 2000-2024 Developer Express Inc.

Last revised November, 2023

END-USER LICENSE AGREEMENT FOR ALL SOFTWARE DEVELOPMENT PRODUCT(S) INCLUDED IN THIS DISTRIBUTION

IMPORTANT - PLEASE READ THIS END-USER LICENSE AGREEMENT (“AGREEMENT”) CAREFULLY BEFORE DOWNLOADING OR USING THE SOFTWARE DEVELOPMENT PRODUCT(S) INCLUDED IN THIS DISTRIBUTION/INSTALLATION.

This Developer Express Inc (“DEVEXPRESS”) AGREEMENT constitutes a legally binding agreement between you or the business and/or entity which you represent (“You” or “LICENSEE”) and DEVEXPRESS for all DEVEXPRESS products, frameworks, widgets, source code, demos, intermediate files, media, printed materials, and documentation (“SOFTWARE DEVELOPMENT PRODUCT(S)”) included in this distribution/installation.

By purchasing, installing, copying, or otherwise using the SOFTWARE DEVELOPMENT PRODUCT(S), you acknowledge that you have read this AGREEMENT and you agree to be bound by its terms and conditions. If you are representing a business and/or entity, you acknowledge that you have the legal authority to bind the business and/or entity you are representing to all the terms and conditions of this AGREEMENT.

If you do not agree to any of the terms and conditions of this AGREEMENT or if you do not have the legal authority to bind the business and/or entity you are representing to any of the terms and conditions of this AGREEMENT, **DO NOT INSTALL, COPY, USE, EVALUATE, OR REPLICATE IN ANY MANNER, ANY PART, FILE OR PORTION OF THE SOFTWARE DEVELOPMENT PRODUCT(S).**

This AGREEMENT is the entire agreement between DEVEXPRESS and LICENSEE concerning its subject matter (including the license, access, and use of the SOFTWARE DEVELOPMENT PRODUCT(S)), and supersedes all prior and contemporaneous agreements, proposals, or representations, written or oral, concerning its subject matter. The parties agree that any term or condition stated in

a LICENSEE quote, bid, purchase order, or in any other LICENSEE terms or order documentation (collectively “LICENSEE DOCUMENTATION”) is void. In the event of any conflict or inconsistency between the terms of this AGREEMENT and any LICENSEE DOCUMENTATION, the terms of this AGREEMENT shall prevail.

All SOFTWARE DEVELOPMENT PRODUCT(S) is licensed, not sold.

1. GRANT OF LICENSE.

Subject to all the terms and conditions of this AGREEMENT, DEVEXPRESS grants LICENSEE a non-exclusive, non-transferable license to install and use the SOFTWARE DEVELOPMENT PRODUCT(S) included in this distribution as authorized in sections 1.1 through 1.5 below:

1.1 INDIVIDUAL USE LICENSE.

If you are an individual, you may install, copy, and use the SOFTWARE DEVELOPMENT PRODUCT(S) by purchasing a 12 month subscription from DEVEXPRESS or its authorized resellers, in accordance with Section 9 of this AGREEMENT.

1.2 BUSINESS AND GOVERNMENT USE LICENSE.

DEVEXPRESS licenses the SOFTWARE DEVELOPMENT PRODUCT(S) on a per-developer basis. If you represent a business and/or entity, you or your employees may install, copy, and use the SOFTWARE DEVELOPMENT PRODUCT(S) by purchasing a 12 month subscription from DEVEXPRESS or its authorized resellers for each developer using the SOFTWARE DEVELOPMENT PRODUCT(S), in accordance with Section 9 of this AGREEMENT. The number of licensed developers using the SOFTWARE DEVELOPMENT PRODUCT(S) must equal or be less than the number of seats purchased from DEVEXPRESS or its authorized resellers.

1.3 COMPLIMENTARY USE LICENSE.

If the SOFTWARE DEVELOPMENT PRODUCT(S) you have obtained is marked as “COMPLIMENTARY” or “FREE”, you may install and use the SOFTWARE DEVELOPMENT PRODUCT(S).

DEVEXPRESS reserves the right to discontinue at its discretion and without advance notice, the availability of COMPLIMENTARY or FREE versions of the SOFTWARE DEVELOPMENT PRODUCT(S) or its constituent parts at any time.

1.4 THIRTY (30) DAY EVALUATION (TRIAL) USE LICENSE.

If the SOFTWARE DEVELOPMENT PRODUCT(S) you have obtained is marked as a “TRIAL” or “EVALUATION,” you may install one copy of the SOFTWARE DEVELOPMENT PRODUCT(S) for evaluation purposes only, for a period of 30 calendar days from the date of installation (“EVALUATION PERIOD”). Upon expiration of the EVALUATION PERIOD, the SOFTWARE DEVELOPMENT PRODUCT(S) must be uninstalled and all copies destroyed.

You MAY NOT CREATE applications or begin software projects using the SOFTWARE DEVELOPMENT PRODUCT(S) under the terms of the THIRTY (30) DAY EVALUATION (TRIAL) USE LICENSE.

You MAY NOT REDISTRIBUTE files in the SOFTWARE DEVELOPMENT PRODUCT(S) distribution if using an evaluation or trial version of the SOFTWARE DEVELOPMENT PRODUCT(S).

1.5 PRE-RELEASE SOFTWARE.

SOFTWARE DEVELOPMENT PRODUCT(S) marked as PRE-RELEASE (including but not limited to the designation of Alpha, Beta, Community Technology Preview “CTP”, or Release Candidate “RC”) may contain deficiencies and as such, should not be considered for use or integrated in any mission critical application.

DEVEXPRESS may, at its sole discretion, discontinue availability of the PRE-RELEASE software, limit or modify PRE-RELEASE software functionality, or eliminate SUPPORT SERVICES for the PRE-RELEASE software at any time. For a complete list of PRE-RELEASE software, refer to the following webpage: <https://www.devexpress.com/pre-release>

2. LIMITATIONS ON REVERSE ENGINEERING, DECOMPILED, AND DISASSEMBLY.

You may not reverse engineer, decompile, create derivative works or disassemble the SOFTWARE DEVELOPMENT PRODUCT(S). If the SOFTWARE DEVELOPMENT PRODUCT(S) is purchased by you with the intent to reverse engineer, decompile, create derivative works, or the exploitation and unauthorized transfer of any DEVEXPRESS intellectual property and trade secrets, to include any exposed methods or source code where provided, no licensed right of use shall exist and any PRODUCT(s) created as a result shall be judged illegal by definition. Any sale or resale of intellectual property or created derivatives so obtained will be prosecuted to the fullest extent of all local, federal and international law.

3. SEPARATION OF COMPONENTS.

The SOFTWARE DEVELOPMENT PRODUCT(S) is licensed as a single PRODUCT(S). The SOFTWARE DEVELOPMENT PRODUCT(S) and its constituent parts and any provided redistributables may not be reverse engineered, decompiled, disassembled or separated for use on more than one computer, nor placed for distribution, sale, or resale as individual creations by LICENSEE. The provision of source code, if included with the SOFTWARE DEVELOPMENT PRODUCT(S), does not constitute transfer of any legal rights to such code, and resale or distribution of all or any portion of all source code and intellectual property will be prosecuted to the fullest extent of all applicable local, federal and international laws. All DEVEXPRESS libraries, source code, redistributables and other files remain DEVEXPRESS’s exclusive property. You may not distribute any files, except those that DEVEXPRESS has expressly designated as REDISTRIBUTABLE(S).

4. RENTAL.

You may not rent, lease, or lend the SOFTWARE DEVELOPMENT PRODUCT(S).

5. TRANSFER.

You may NOT permanently or temporarily transfer ANY of your rights under this AGREEMENT to any individual or business or government entity without prior written approval from DEVEXPRESS. Regardless of any modifications which you make and regardless of how you might compile, link, and/or package your programs, under no circumstances may the libraries, Redistributables, and/or

files included in the SOFTWARE DEVELOPMENT PRODUCT(S) (including any portions thereof) be used for developing programs by anyone other than you. Only you as the LICENSEE have the right to use the libraries, redistributables, or other files of the SOFTWARE DEVELOPMENT PRODUCT(S) (or any portions thereof) for developing programs created with the SOFTWARE DEVELOPMENT PRODUCT(S). You may not share copies of the Redistributables with other co-developers. You may not reproduce or distribute any DEVEXPRESS documentation without the permission of DEVEXPRESS.

6. REDISTRIBUTION.

The SOFTWARE DEVELOPMENT PRODUCT(s) may include certain files (“REDISTRIBUTABLE(s)”) intended for distribution by you to the users of software applications which you create. Redistributables include, for example, those files identified in printed or on-line documentation as redistributable files or those files preselected for deployment by an install utility provided with the SOFTWARE DEVELOPMENT PRODUCT(S) (if any). In all circumstances, the REDISTRIBUTABLES for the SOFTWARE DEVELOPMENT PRODUCT(S) are only those files specifically designated as such by DEVEXPRESS.

AT NO TIME MAY LICENSEE CREATE ANY TOOL, REDISTRIBUTABLE, OR PRODUCT THAT DIRECTLY OR INDIRECTLY COMPETES WITH ANY DEVEXPRESS PRODUCT(S), INCLUDING BUT NOT LIMITED TO THE SOFTWARE DEVELOPMENT PRODUCT(S), BY UTILIZING ALL OR ANY PORTION OF THE DEVEXPRESS SOFTWARE DEVELOPMENT PRODUCT(S).

Distribution by the LICENSEE of any design-time tools (EXE’s or DLL’s), executables, and source code distributed to LICENSEE by DEVEXPRESS as part of this SOFTWARE DEVELOPMENT PRODUCT(S) and not explicitly identified as a redistributable file is strictly prohibited. The LICENSEE shall not develop software applications that provide an application programming interface to the SOFTWARE DEVELOPMENT PRODUCT(S) or the SOFTWARE DEVELOPMENT PRODUCT(S) as modified.

The LICENSEE may NOT distribute the SOFTWARE DEVELOPMENT PRODUCT(S), in any format, to others for development or application compilation purposes.

If you have purchased a 12 month subscription as described in Section 9 of this AGREEMENT, or have obtained a COMPLIMENTARY USE LICENSE as described in Section 1.3 of this AGREEMENT, you may reproduce and distribute copies of the REDISTRIBUTABLES, provided that such copies are made from the original copy of the REDISTRIBUTABLES included with the SOFTWARE DEVELOPMENT PRODUCT(S) or modified versions of the REDISTRIBUTABLES which are provided to you by DEVEXPRESS or those which you create. Copies of REDISTRIBUTABLES may only be distributed with and for the sole purpose of executing application programs permitted under this AGREEMENT that you have created using the SOFTWARE DEVELOPMENT PRODUCT(S).

The complete list of REDISTRIBUTABLES under this AGREEMENT is as follows:

DevExpress.AspNetCore.Common.v23.2.dll	DevExpress.AspNetCore.Core.v23.2.dll	DevExpress.AspNetCore.Reporting.v23.2.dll
	DevExpress.AspNetCore.Reporting.v23.2.Azure.dll	
DevExpress.Blazor.v23.2.dll	DevExpress.Blazor.Reporting.v23.2.JSBasedControls.dll	

DevExpress.Blazor.Reporting.v23.2.JSBasedControls.Common.dll DevExpress-
 press.Blazor.Reporting.v23.2.JSBasedControls.WebAssembly.dll DevEx-
 press.Blazor.Reporting.v23.2.Viewer.dll DevExpress.BonusSkins.v23.2.dll DevEx-
 press.Charts.v23.2.Core.dll DevExpress.CodeParser.v23.2.dll DevExpress.Data.v23.2.dll
 DevExpress.Data.Desktop.v23.2.dll DevExpress.DataAccess.v23.2.dll DevEx-
 press.DataAccess.v23.2.UI.dll DevExpress.DataVisualization.v23.2.Core.dll DevEx-
 press.Diagram.v23.2.Core.dll DevExpress.Drawing.v23.2.dll DevExpress.Drawing.v23.2.Skia.dll
 DevExpress.Mvvm.v23.2.dll DevExpress.Office.v23.2.Core.dll DevExpress.Pdf.v23.2.Core.dll
 DevExpress.Pdf.v23.2.Drawing.dll DevExpress.Pdf.v23.2.SkiaRenderer.dll De-
 vExpress.PivotGrid.v23.2.Core.dll DevExpress.Printing.v23.2.Core.dll DevEx-
 press.RichEdit.v23.2.Core.dll DevExpress.RichEdit.v23.2.Export.dll DevEx-
 press.Sparkline.v23.2.Core.dll DevExpress.Utils.v23.2.dll DevExpress.Utils.v23.2.UI.dll
 DevExpress.Web.ASPxThemes.v23.2.dll DevExpress.Web.Mvc.v23.2.dll DevEx-
 press.Web.Mvc5.v23.2.dll DevExpress.Web.Reporting.v23.2.Common.Services.dll
 DevExpress.Web.Resources.v23.2.dll DevExpress.Web.v23.2.dll DevEx-
 press.WinUI.Core.v23.2.dll DevExpress.WinUI.DocumentRenderer.v23.2.dll De-
 vExpress.WinUI.DocumentViewer.v23.2.dll DevExpress.WinUI.Editors.v23.2.dll
 DevExpress.WinUI.Grid.v23.2.dll DevExpress.WinUI.Mvvm.v23.2.dll DevEx-
 press.WinUI.Printing.v23.2.dll DevExpress.Xpf.CodeView.v23.2.dll DevEx-
 press.Xpf.Core.v23.2.dll DevExpress.Xpf.DataAccess.v23.2.dll DevExpress.Xpf.Diagram.v23.2.dll
 DevExpress.Xpf.Docking.v23.2.dll DevExpress.Xpf.DocumentViewer.v23.2.Core.dll
 DevExpress.Xpf.ExpressionEditor.v23.2.dll DevExpress.Xpf.Grid.v23.2.Core.dll
 DevExpress.Xpf.Grid.v23.2.dll DevExpress.Xpf.Layout.v23.2.Core.dll Dev-
 Express.Xpf.LayoutControl.v23.2.dll DevExpress.Xpf.NavBar.v23.2.dll De-
 vExpress.Xpf.PivotGrid.v23.2.dll DevExpress.Xpf.Printing.v23.2.dll DevEx-
 press.Xpf.PropertyGrid.v23.2.dll DevExpress.Xpf.ReportDesigner.v23.2.dll De-
 vExpress.Xpf.Ribbon.v23.2.dll DevExpress.Xpf.RichEdit.v23.2.dll DevEx-
 press.Xpo.v23.2.dll DevExpress.XtraBars.v23.2.dll DevExpress.XtraCharts.v23.2.dll
 DevExpress.XtraCharts.v23.2.Extensions.dll DevExpress.XtraCharts.v23.2.Wizard.dll
 DevExpress.XtraEditors.v23.2.dll DevExpress.XtraGauges.v23.2.Core.dll DevEx-
 press.XtraLayout.v23.2.dll DevExpress.XtraNavBar.v23.2.dll DevExpress.XtraPivotGrid.v23.2.dll
 DevExpress.XtraPrinting.v23.2.dll DevExpress.XtraReports.v23.2.dll DevEx-
 press.XtraReports.v23.2.CodeCompletion.dll DevExpress.XtraReports.v23.2.Extensions.dll
 DevExpress.XtraReports.v23.2.Service.dll DevExpress.XtraReports.v23.2.Web.Azure.dll
 DevExpress.XtraReports.v23.2.Web.dll DevExpress.XtraReports.v23.2.Web.WebForms.dll
 DevExpress.XtraRichEdit.v23.2.dll DevExpress.XtraTreeList.v23.2.dll DevEx-
 press.XtraVerticalGrid.v23.2.dll

NPM packages: @devexpress/analytics-core devexpress-reporting devexpress-reporting-angular devexpress-richedit devextreme devextreme-dist

LICENSEE MAY NOT REDISTRIBUTE any files in the SOFTWARE DEVELOPMENT PRODUCT(S) distribution if using an evaluation, trial, Not for Resale, or demo version of the SOFTWARE DEVELOPMENT PRODUCT(S).

7. COPYRIGHT.

All title and copyrights in and to the SOFTWARE DEVELOPMENT PRODUCT(S) (including but not limited to any DEVEXPRESS trademarks, copywritten images, demos, source code, intermediate files, packages, photographs, redistributables, animations, video, audio, music, text, and “applets” incorporated into the SOFTWARE DEVELOPMENT PRODUCT(S) the accompanying printed materials, and any copies of the SOFTWARE DEVELOPMENT PRODUCT(S)) are owned by DEVEXPRESS or its subsidiaries.

The SOFTWARE DEVELOPMENT PRODUCT(S) is protected by copyright laws and international treaty provisions and therefore, you must treat the SOFTWARE DEVELOPMENT PRODUCT(S) like any other copyrighted material except that you may install and use the SOFTWARE DEVELOPMENT PRODUCT(S) as described in this AGREEMENT.

8. OPEN SOURCE LIBRARIES.

The SOFTWARE DEVELOPMENT PRODUCT(S) found in this installation package may include or require certain third-party, open source components or libraries (“THE OPEN SOURCE LIBRARIES”).

Where applicable, DEVEXPRESS may include a “NOTICE” file to provide a list of THE OPEN SOURCE LIBRARIES required for certain portions of the documentation, sample source code, and other demo projects.

THE OPEN SOURCE LIBRARIES included in the SOFTWARE DEVELOPMENT PRODUCT(S) are done so pursuant to each individual open source library license and subject to the disclaimers and limitations on liability set forth in each open source library license.

The SOFTWARE DEVELOPMENT PRODUCT(S) may include external installation references for THE OPEN SOURCE LIBRARIES on their respective package management locations. These external locations may include, but are not limited to, NuGet or npm. Prior to installing THE OPEN SOURCE LIBRARIES, You are responsible for reviewing and agreeing to each associated license agreement accompanying a library, and any other sub-dependency required by that library.

Whether included as part of the SOFTWARE DEVELOPMENT PRODUCT(S) installation package, or referenced as an external dependency or requirement, THE OPEN SOURCE LIBRARIES are provided “AS IS”, WITHOUT WARRANTY OF ANY KIND, EXPRESS OR IMPLIED, INCLUDING BUT NOT LIMITED TO THE WARRANTIES OF MERCHANTABILITY, FITNESS FOR A PARTICULAR PURPOSE AND NONINFRINGEMENT. IN NO EVENT SHALL DEVEXPRESS, THE AUTHORS, OR COPYRIGHT HOLDERS BE LIABLE FOR ANY CLAIM, DAMAGES OR OTHER LIABILITY, WHETHER IN AN ACTION OF CONTRACT, TORT OR OTHERWISE, ARISING FROM, OUT OF OR IN CONNECTION WITH THE OPEN SOURCE LIBRARIES OR THE USE OF OTHER DEALINGS IN THE OPEN SOURCE LIBRARIES.

THE OPEN SOURCE LIBRARIES listed in this section are included in this SOFTWARE DEVELOPMENT PRODUCT(S) installation package.

Ace (Ajax.org Cloud9 Editor) (Open Source - BSD License) Copyright (c) 2010, Ajax.org B.V. <https://github.com/ajaxorg/ace/blob/master/LICENSE>

Bouncy Castle (Open Source - The Bouncy Castle License) Copyright (C) 2000-2020 The Legion of the Bouncy Castle Inc. Portions of the Bouncy Castle Library used to support X.509, CMS (RFC

3852), and Time Stamp Protocol (RFC 3161). <https://github.com/bcgit/bc-csharp/blob/master/crypto/License.html>

cldrjs (Open Source - MIT License) Copyright (c) Rafael Xavier de Souza <http://rafael.xavier.blog.br>
<https://github.com/rxaviers/cldrjs/blob/master/LICENSE>

EntityFramework6 (Open Source - Apache License) Copyright (c) Microsoft Open Technologies, Inc. All rights reserved. <https://github.com/aspnet/EntityFramework6/blob/master/License.txt>

Globalize JavaScript Library (Open Source - MIT License) Copyright (c) Software Freedom Conservancy, Inc. <http://jquery.org/license>

jQuery JavaScript Library (Open Source - MIT License) Copyright (c) jQuery Foundation and other contributors <http://jquery.com/>

JSZip JavaScript Library (Open Source - MIT License) Copyright (c) Stuart Knightley, David Duponchel, Franz Buchinger, António Afonso <https://stuk.github.io/jszip/>

Knockout JavaScript Library (Open Source - MIT License) Copyright (c) Knockoutjs.com <http://knockoutjs.com/> <http://opensource.org/licenses/mit-license.php>

logging-log4net (Open Source – Apache 2.0) Copyright 2004-2017 The Apache Software Foundation <https://github.com/apache/logging-log4net/blob/master/LICENSE>

Microsoft.Extensions.FileSystemGlobbing (Open Source – MIT License) Copyright (c) .NET Foundation and Contributors. All rights reserved. <https://github.com/dotnet/runtime/blob/main/LICENSE.TXT>

Mono: dotnet.js, dotnet.wasm (Open Source – MIT License) Copyright 2018 Microsoft <https://github.com/mono/mono/blob/main/LICENSE>

Reporting.Import (Open Source – MIT License) Copyright (c) 2018 Developer Express Inc. <https://github.com/DevExpress/Reporting.Import/blob/master/LICENSE>

SQLite (Public Domain) <https://www.sqlite.org/copyright.html>

System.Collections, System.Collections.Concurrent, System.ComponentModel, System.ComponentModel.TypeConverter, System.Console, System.IO.FileSystem, System.Linq, System.Linq.Expressions, System.ObjectModel, System.Private.CoreLib, System.Private.Runtime.InteropServices.JavaScript, System.Private.Uri, System.Runtime.CompilerServices.Unsafe, System.Text.RegularExpressions (Open Source – MIT License) Copyright (c) .NET Foundation and Contributors. All rights reserved. <https://github.com/dotnet/runtime/blob/main/LICENSE.TXT>

System.ComponentModel.Composition.dll (Open Source – MIT License) Copyright (c) .NET Foundation and Contributors. All rights reserved. <https://github.com/dotnet/runtime/blob/main/LICENSE.TXT>

System.Private.ServiceModel.dll, System.ServiceModel.dll, System.ServiceModel.Primitives.dll (Open Source - MIT License) Copyright (c) .NET Foundation and Contributors. All rights reserved. <https://github.com/dotnet/wcf/blob/main/LICENSE.TXT>

9. TWELVE (12) MONTH SUBSCRIPTION AND UPDATES.

DEVEXPRESS licenses the SOFTWARE DEVELOPMENT PRODUCT(S) on a subscription basis. A subscription lasts for a 12 month period from the date of purchase. LICENSEE will be eligible to receive all major and minor updates for the SOFTWARE DEVELOPMENT PRODUCT(S) during this 12 month period. Upon expiration of a subscription (12 months, plus 1 day after original purchase date), LICENSEE can optionally renew the SOFTWARE DEVELOPMENT PRODUCT(S) subscription for an additional 12 month period (and each subsequent year thereafter) in order to continue receiving major and minor updates of the SOFTWARE DEVELOPMENT PRODUCT(S) from DEVEXPRESS.

If the SOFTWARE DEVELOPMENT PRODUCT(S) is labeled as an update, you must be properly licensed to obtain the updated SOFTWARE DEVELOPMENT PRODUCT(S). A SOFTWARE DEVELOPMENT PRODUCT(S) labeled as an update replaces and/or supplements the SOFTWARE DEVELOPMENT PRODUCT(S) that formed the basis for your eligibility for the update, and together constitutes a single PRODUCT(S). You may only use the updated PRODUCT(S) in accordance with all the terms of this AGREEMENT.

Pricing for the 12 month SOFTWARE DEVELOPMENT PRODUCT(S) subscription and any subsequent renewal of the subscription are listed on devexpress.com and subject to change with or without notice.

REDISTRIBUTABLES referenced in this AGREEMENT are dependent upon the type of 12 month subscription purchased from DEVEXPRESS.

DEVEXPRESS reserves the right to discontinue the SOFTWARE DEVELOPMENT PRODUCT(S) or its constituents, at any time.

DEVEXPRESS also reserves the right to enforce licensing and reduce software piracy through license validation and verification mechanisms.

10. DOWNLOAD of SOFTWARE DEVELOPMENT PRODUCT(S).

The SOFTWARE DEVELOPMENT PRODUCT(S) will be made available for download from DevExpress.com exclusively.

11. EXPORT RESTRICTIONS.

DEVEXPRESS expressly complies with all export restrictions imposed by the government of the United States of America. You, as LICENSEE, must agree not to export or re-export the SOFTWARE DEVELOPMENT PRODUCT(S) within any created application to any country, person, entity or end user subject to U.S.A. export restrictions. Restricted countries currently include, but are not necessarily limited to Cuba, Iran, North Korea, Sudan, Syria, and Venezuela. You warrant and represent that neither the U.S.A. Bureau of Export Administration nor any other federal agency has suspended, revoked or denied your export privileges.

12. DISCLAIMER OF WARRANTY.

DEVEXPRESS expressly disclaims any warranty for the SOFTWARE DEVELOPMENT PRODUCT(S). THE SOFTWARE DEVELOPMENT PRODUCT(S) AND ANY RELATED DOCUMENTATION IS PROVIDED "AS IS" WITHOUT WARRANTY OF ANY KIND, EITHER EX-

PRESS OR IMPLIED, INCLUDING, WITHOUT LIMITATION, THE IMPLIED WARRANTIES OF MERCHANTABILITY, FITNESS FOR A PARTICULAR PURPOSE, OR NON-INFRINGEMENT. DEVEXPRESS DOES NOT WARRANT, GUARANTEE, OR MAKE ANY REPRESENTATIONS REGARDING THE USE, OR THE RESULTS OF THE USE, OF THE SOFTWARE DEVELOPMENT PRODUCT(S) IN TERMS OF CORRECTNESS, ACCURACY, RELIABILITY, OR OTHERWISE. THE ENTIRE RISK ARISING OUT OF USE OR PERFORMANCE OF THE SOFTWARE DEVELOPMENT PRODUCT(S) REMAINS WITH YOU. No oral or written information or advice given by DEVEXPRESS or its employees shall create a warranty or in any way increase the scope of this warranty.

13. LIMITATIONS ON LIABILITY.

To the maximum extent permitted by applicable law, in no event shall DEVEXPRESS be liable for any special, incidental, indirect, or consequential damages whatsoever (including, without limitation, damages for loss of business profits, business interruption, loss of business information, or any other pecuniary loss) arising out of the use of or inability to use the SOFTWARE DEVELOPMENT PRODUCT(S) or the provision of or failure to provide SUPPORT SERVICES, even if DEVEXPRESS has been advised of the possibility of such damages.

LICENSEE understands that the SOFTWARE DEVELOPMENT PRODUCT(S) may produce inaccurate results because of a failure or fault within the SOFTWARE DEVELOPMENT PRODUCT(S) or failure by LICENSEE to properly use and or deploy the SOFTWARE DEVELOPMENT PRODUCT(S). LICENSEE assumes full and sole responsibility for any use of the SOFTWARE DEVELOPMENT PRODUCT(S), and bears the entire risk for failures or faults within the SOFTWARE DEVELOPMENT PRODUCT(S). You agree that regardless of the cause of failure or fault or the form of any claim, YOUR SOLE REMEDY AND DEVEXPRESS'S SOLE OBLIGATION SHALL BE GOVERNED BY THIS AGREEMENT AND IN NO EVENT SHALL DEVEXPRESS'S LIABILITY EXCEED THE PRICE PAID TO DEVEXPRESS FOR THE SOFTWARE DEVELOPMENT PRODUCT(S). This Limited Warranty is void if failure of the SOFTWARE DEVELOPMENT PRODUCT(S) has resulted from accident, abuse, alteration, unauthorized use or misapplication of the SOFTWARE DEVELOPMENT PRODUCT(S).

14. INDEMNIFICATION.

You hereby agree to indemnify DEVEXPRESS and its officers, directors, employees, agents, and representatives from each and every demand, claim, loss, liability, or damage of any kind, including actual attorney's fees, whether in tort or contract, that it or any of them may incur by reason of, or arising out of, any claim which is made by any third party with respect to any breach or violation of this AGREEMENT by you or any claims based on the Applications and the SOFTWARE DEVELOPMENT PRODUCT(S) included herein, including without limitation any claims asserted by your end user customers.

15. U.S. GOVERNMENT RESTRICTED RIGHTS.

For SOFTWARE DEVELOPMENT PRODUCT(S) purchased, installed, copied or otherwise used on behalf of any United States Government agency or department ("US GOVT"), US GOVT agrees that the SOFTWARE DEVELOPMENT PRODUCT(S) are acquired with restricted rights according to the following:

For the Department of Defense: The SOFTWARE DEVELOPMENT PRODUCT(S) is “Commercial Computer Software” as defined in Clause 252.227-7013(c)(1) of the DFARS.

For all agencies or departments: US GOVT rights in the SOFTWARE DEVELOPMENT PRODUCT(S) is defined in Clause 52.227-19(c)(2) of the FAR.

The manufacturer of the SOFTWARE DEVELOPMENT PRODUCT(S) is: Developer Express, Inc., 330 N. Brand Blvd Suite 370, Glendale, CA 91203.

16. SUPPORT SERVICES.

DEVEXPRESS may provide you with support services related to the SOFTWARE DEVELOPMENT PRODUCT(S) (“SUPPORT SERVICES”). Use of SUPPORT SERVICES is governed by DEVEXPRESS policies and programs described in the user manual, in “on line” documentation and/or other DEVEXPRESS provided materials. DEVEXPRESS may restrict or otherwise discontinue SUPPORT SERVICES provided to you if your use of SUPPORT SERVICES is deemed by DEVEXPRESS, in its sole and reasonable discretion, to be excessive and beyond the scope of fair use.

Any supplemental SOFTWARE DEVELOPMENT PRODUCT(S) provided to you as part of the SUPPORT SERVICES shall be considered part of the SOFTWARE DEVELOPMENT PRODUCT(S) and subject to the terms and conditions of this AGREEMENT. With respect to technical information you provide to DEVEXPRESS as part of the SUPPORT SERVICES, DEVEXPRESS may use such information for its business purposes, including for SOFTWARE DEVELOPMENT PRODUCT(S) support and development.

If the SOFTWARE DEVELOPMENT PRODUCT(S) you have obtained is marked as “COMPLIMENTARY” or “FREE”, or if your DEVEXPRESS SOFTWARE DEVELOPMENT PRODUCT(S) Subscription has expired or your DEVEXPRESS SOFTWARE DEVELOPMENT PRODUCT(S) license was revoked due to U.S. Treasury Department-related sanctions, DEVEXPRESS shall restrict the availability of SUPPORT SERVICES, and may discontinue applicable SUPPORT SERVICES at its sole discretion, without advance notice.

17. TERMINATION.

Without prejudice to any other rights or remedies, DEVEXPRESS will terminate this AGREEMENT upon your failure to comply with all the terms and conditions of this AGREEMENT. In such events, LICENSEE must destroy all copies of the SOFTWARE DEVELOPMENT PRODUCT(S) and all of its component parts including any related documentation, and must remove ANY and ALL use of DEVEXPRESS intellectual property from any applications distributed by LICENSEE, whether in native, altered or compiled states.

18. TAX.

DEVEXPRESS may be required by local, state, or national government laws, to collect sales or use tax from you. If DEVEXPRESS is not legally required to collect any applicable taxes at the time of purchase, you should confirm that your local, state, or national government does not impose any sales or use tax on electronically delivered software. You are entirely liable for any such sales or use tax.

19. PERSONAL DATA.

All Information DEVEXPRESS collects from you is stored and maintained on servers utilizing reasonable and appropriate data security safeguards. DEVEXPRESS does not lend, lease, sell, or market information it obtains from its customers or those who provide us personally identifiable information. DEVEXPRESS does not disclose purchase information or licensing information to third parties.

DEVEXPRESS collects personally identifiable information whenever you purchase/license a DEVEXPRESS product or service. Information includes Name, Address, Phone Number, Email address, Payment Information, Product Purchases, Licenses Owned, Employee/Contact Details, etc. The information we collect allows DEVEXPRESS to communicate with you regarding upcoming product updates, new product releases, company news and other important business matters.

DEVEXPRESS does not wish to receive, act to procure, nor desire to solicit, confidential or proprietary materials and information from you through the use of the SOFTWARE DEVELOPMENT PRODUCT(S) or SUPPORT SERVICES. Any and all materials, attachments, or information submitted by you as part of error submissions, or divulged during chats, online discussions, Support Center submissions, or made available to DEVEXPRESS in any manner will be deemed NOT to be confidential by DEVEXPRESS. You acknowledge that submissions to DEVEXPRESS will not be considered confidential or proprietary and that DEVEXPRESS will be under no obligation to keep such information confidential.

Your election to use the SOFTWARE DEVELOPMENT PRODUCT(S) indicates your acceptance of the terms of this AGREEMENT. You are responsible for maintaining confidentiality of your username, password and other sensitive information. You are responsible for all activities that occur in your user account and in case of any unauthorized activity on your account, you agree to inform DEVEXPRESS immediately by any method listed on the DEVEXPRESS website's Contacts page. DEVEXPRESS is not responsible for any loss or damage to you or to any third party incurred as a result of any unauthorized access and/or use of your user account, or otherwise.

DEVEXPRESS may disclose or report Confidential Information in limited circumstances where it believes in good faith that disclosure is required under the law. For example, DEVEXPRESS may be required to disclose Confidential Information to cooperate with regulators or law enforcement authorities, to comply with a legal process such as a court order, subpoena, search warrant, or a law enforcement request. Additionally, if the ownership of all or substantially all of our business changes or we otherwise transfer assets relating to our business or the SOFTWARE DEVELOPMENT PRODUCT(S) to a third party, such as by merger, acquisition, bankruptcy proceeding or otherwise, we may transfer or sell your personal information to the new owner. In such a case, unless permitted otherwise by applicable law, your information would remain subject to the promises made in the applicable privacy policy unless you agree differently.

DEVEXPRESS's use of personal data is governed by the terms set forth in our comprehensive Privacy Policy: <https://www.devexpress.com/aboutus/privacy-policy.xml>

19.1 DEMO FEEDBACK.

The Demo Feedback feature presented within the included demo applications of the SOFTWARE DEVELOPMENT PRODUCT(S), allows you to send feedback to DEVEXPRESS and, optionally, include any additional information to describe the specific compliment or concern you may have with regards to the demo application. Although Demo Feedback doesn't intentionally collect personally

identifiable information, it is possible that such information might be captured in the feedback text you provide. DEVEXPRESS does not wish to receive such information nor will it use this information to identify you.

Except as otherwise described in this statement, Demo Feedback does not transmit personal information to DEVEXPRESS.

20. MISCELLANEOUS.

Where applicable, as part of the SOFTWARE DEVELOPMENT PRODUCT(S) installation, DEVEXPRESS may include and/or require the use of certain redistributable libraries made available in binary form by Microsoft under the terms and conditions of the following license agreement: Entity Framework 6 Runtime License ([https://msdn.microsoft.com/en-us/library/dn467385\(v=vs.113\).aspx](https://msdn.microsoft.com/en-us/library/dn467385(v=vs.113).aspx)).

No right of use or license is granted for the Map providers available in the SOFTWARE DEVELOPMENT PRODUCT. LICENSEE must obtain and follow the appropriate licensing terms and right of use set forth by each map provider.

When using OpenStreetMap data, you must read and understand the OpenStreetMap terms of use. Read the OpenStreetMap Legal FAQ. https://wiki.osmfoundation.org/wiki/Licence/Licence_and_Legal_FAQ

If using OpenStreetMap Tiles, you must read and understand the OpenStreetMap Tile Usage Policy. Read the OpenStreetMap Tile Policy. <https://operations.osmfoundation.org/policies/tiles/>

When using Bing Maps, you must read and understand Microsoft's terms of use. Read the Bing Maps Licensing and Pricing Information. <http://www.microsoft.com/maps/product/licensing.aspx>

Wherever applicable, the SOFTWARE DEVELOPMENT PRODUCT(S) may implement certain specification published by MBTiles, and made available under the Creative Commons Attribution 3.0 Unported (CC-BY) license. <https://github.com/mapbox/mbtiles-spec/blob/master/LICENSE>

This AGREEMENT shall be construed, interpreted and governed by the laws of the State of Nevada, U.S.A. This AGREEMENT gives you specific legal rights; you may have others that vary from state to state and from country to country.

This AGREEMENT may only be modified in writing signed by you and an authorized officer of Developer Express Inc. This AGREEMENT is the entire agreement between DEVEXPRESS and LICENSEE concerning its subject matter (including the license, access, and use of the SOFTWARE DEVELOPMENT PRODUCT(S), and supersedes all prior and contemporaneous agreements, proposals, or representations, written or oral, concerning its subject matter. The parties agree that any term or condition stated in a LICENSEE quote, bid, purchase order, or in any other LICENSEE terms or order documentation (collectively "LICENSEE DOCUMENTATION") is void. In the event of any conflict or inconsistency between the terms of this AGREEMENT and any LICENSEE DOCUMENTATION, the terms of this AGREEMENT shall prevail.

If any provision of this AGREEMENT is found void or unenforceable, the remainder will remain valid and enforceable according to its terms. If any remedy provided is determined to have failed

for its essential purpose, all limitations of liability and exclusions of damages set forth in the Limited Warranty shall remain in effect.

DEVEXPRESS reserves all rights not specifically granted in this AGREEMENT.

Should you have any questions concerning this AGREEMENT, contact us directly in the United States at +1 (818) 844 3383, or write: Developer Express Inc. Legal department / 330 N. Brand Blvd Suite 370, Glendale, CA 91203.

All trademarks and registered trademarks are property of their respective owners.