

ProTable-CAB™ 2 Axis Dimensional Measuring System

ProTable-CAB is a 2 axis turn-key solution for dimensional measurements.

This award winning* system uses two ProScale® measuring systems placed in an X-Y configuration. Non-skilled operators can make simultaneous dimensional (height and width) measurements up to 40 x 60 inches – Standard Model, or 48 by 96 inches – XL Model.

The measuring table angle is adjustable from 15 to 55 degrees of tilt for maximum comfort and ease of operation (Standard model only).

ProTable-CAB comes fully assembled. Simply remove the packing, adjust the table angle and begin measuring parts.

Available in three configurations:

ProTable CAB & ProTable CAB XL

This model uses a ProScale LCD Digital Readout on each of the measuring axes. These readouts are powered by two AA batteries making this entire measuring system completely portable – no external power is required!

ProTable-CAB V & ProTable-CAB VXL

The **V** model replaces individual readouts with a touch screen LCD monitor and **VDRO™** software. The Virtual Digital Readout software includes a simple-to-use interface that displays the actual measured value of each axis with a color coded indication of an In- or Out-of-tolerance condition. Measurement results are compared to nominal part geometry data stored in a database. Individual part measurements can then be recorded in a .CSV file.

ProTable-CAB S & ProTable-CAB SXL

The **S** model is a fully configured system that includes an industrial rated computer, wireless data transmission, an LCD touch screen monitor and **ProCAB QC™** Quality Control software. All software is pre-installed and configured for your system. The software provides a method to import order or production data and document the dimensional quality of measured parts. ProCAB-QC software is unique in that it will automatically identify a *randomly* measured part, associate the measurement data with a corresponding line item on an order and record the measurement results.

ProTable-CAB Specifications

Measuring Range:	
Standard Size:	40 x 60 inches (1000mm x 1500mm)
XL Size:	48 x 96 inches (1200mm x 2400mm)
Accuracy:	± .012in. (± .3mm)
Resolution:	.001in (.01mm)
Power:	ProTable-CAB & XL: 4 AA Batteries ProTable-CAB V & VXL: 120 or 240VAC ProTable-CAB S & SXL: 120 or 240VAC
Shipping Weight:	Standard Models: Approximately 700 lbs (320kg) XL Models: Approximately 1200 lbs (560kg)



* Winner of the 2009
Sequoia Award
for Product Innovation



Custom sizes, designs and configurations are available for unique measurement requirements.

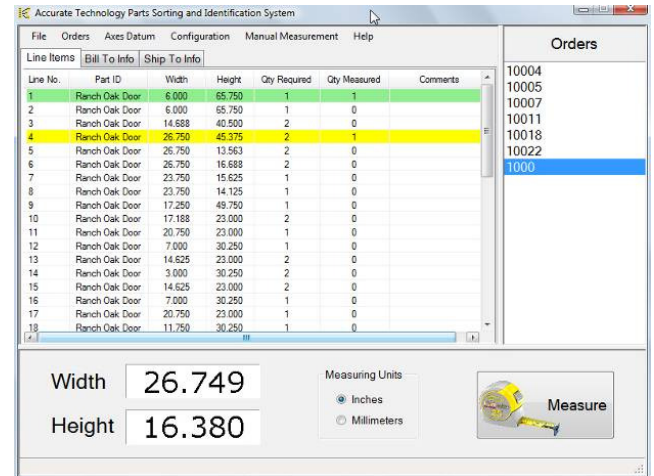
ProCAB-QC™ - Quality Control Software

ProCAB-QC is a Windows® application designed to measure and document the dimensional quality of fabricated or purchased parts such as cabinet doors.

Randomly measured parts are **automatically identified**, associated with a corresponding line item on an order, and measurement results recorded.

A .CSV file, created by your software system, provides the method to import data representing production orders or shipments.

Upon order completion, ProCAB-QC can generate a custom packing slip showing company information, part specifications, bar-coded data, and measurement results for each part.



Some Key ProCAB-QC Features

- Parts can be measured in any sequence.
- Measurement tolerance for height and width are independently definable.
- Part data is imported using a .CSV file as a single order or multi-order file.
- Recognizes if one or more line items have the same measurement specifications.
- Line items are marked complete when the prescribed number of parts have been measured.
- Orders are marked complete when all line items have been measured.
- Completed order measurement data is written to history files when an order is complete.
- Incomplete Order Reports can be generated to indicate missing or out of tolerance parts.
- "Rejected" labels can be printed for non-conforming parts.

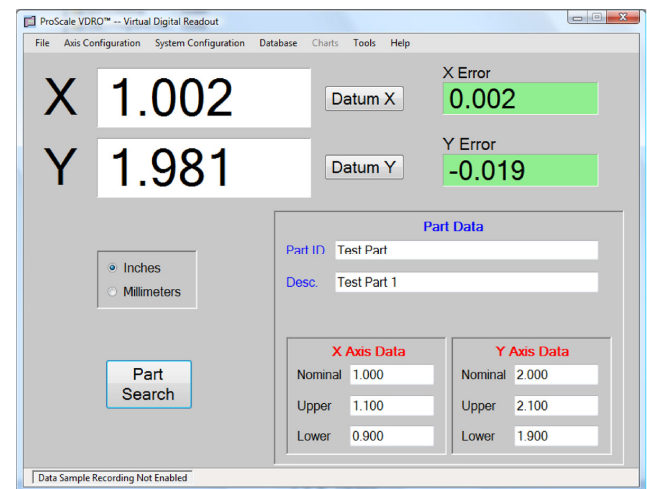


VDRO™ - Virtual Digital Readout Software

VDRO is a Windows® application designed to provide a cost effective solution for measuring applications where one or two axes of part measurements must be checked and/or recorded.

Using VDRO and a ProTable-CAB, actual measurement data can be compared to nominal part data stored in a database.

The data output file is a .CSV format and can be easily imported by Excel™ or other spreadsheet software or Process Control programs.



Some Key VDRO Features

- One or two axes of operation
- Parts database for storage of part geometry & parameters
- Part measurements are saved to .CSV file.
- The measured part image can be displayed when a part is selected.
- Display a .PDF document associated with the measured part.
- Histogram charting of recorded measurements.

General Requirements for ProCAB-QC or VDRO:

Pentium class or greater, Windows® XP, Vista or WIN 7, Microsoft .NET Framework, USB port, CD Drive and internet access.